



CLARK WE ACADEMY

2024 NEW CURRICULUM

CONTENT

- 01 ABOUT US
- 02 WHY CLARK?
- 03 FEATURES
- 04 PROGRAMS
- 05 SCHEDULE
- 06 ENVIRONMENT
- 07 MEAL
- 08 ACTIVITIES
- 09 FACILITY
- 10 EXPENSES
- 11 INFORMATION

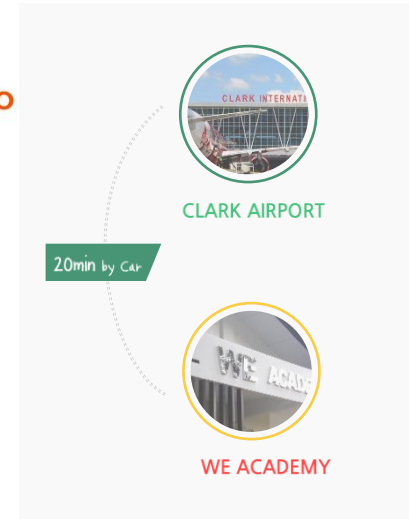


ABOUT US

- ☞ CLARK WE ACADEMY is a resort-type English language school located on a large site of [over 12,000sqm](#), providing the best learning environment and relaxation.
- ☞ Experienced and trained [Native speakers](#) and Filipino teachers provide quality instruction.
- ☞ There are convenient facilities such as a golf driving range, a gym, a swimming pool, a basketball court, a badminton court, a soccer field, and a mini mart in the language school, and children can run and play freely in a large space.
- ☞ Clean dormitories, modern lecture halls, and delicious meals are also the pride of WE ACADEMY.

02 WHY CLARK?

What kind of places is CLARK? 0% crime rate! The safest place in the Philippines!



Best accessibility

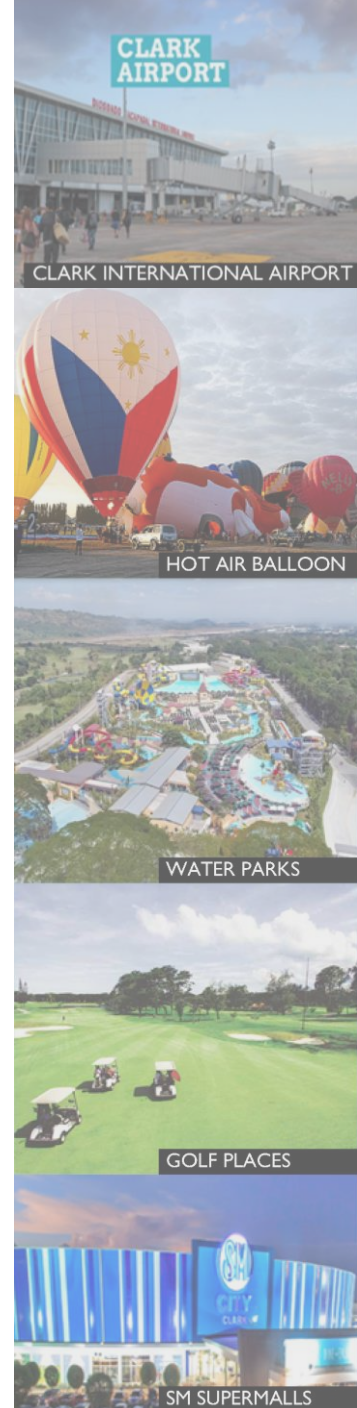
Clark International Airport has a variety of direct flights, including Clark-Korea (Incheon, Gimhae, Daegu, Yangyang, etc.), Clark-Japan (Osaka), Clark-Taiwan (Taipei, Kaohsiung), and Clark-China (Guangzhou). It can be reached within 4 hours from most major Asian cities. It is very close from the airport to the language school by car in 20 minutes. (For Vietnam: Manila-Haoni, Manila-Ho Chi Minh are available) *As of the first half of 2020

Little California

Clark, nicknamed Little California, is a city where you can feel the atmosphere of the West. It is the region where most Westerners live in the Philippines, and it is a city where life is convenient with shopping malls, hospitals, hotels, restaurants, and golf courses.

Transportation Hub in Asia

Based on the convenience of transportation, now Clark attracts tourists and retirees from all over the world, and it is in the spotlight as a representative English study destination in the Philippines.



03 WE ACADEMY FEATURES

Study abroad life like relaxation in a 12,000sqm spacious resort-type language school!
There is a family program available from 4 years old!



01 Enjoy your time at a resort-type language school!

You can enjoy study abroad life like relaxation with your family at the 12,000sqm spacious resort-type language school.

02 Adult student's life in a free atmosphere!

WE ACADEMY is not a spartan style academy. We guarantee a free life by applying minimum regulations. (Free going out, no curfew)
These rules apply only to legal adults in each country.

03 We offer native English speaking Class!

Native English classes are offered by native English teachers from a variety of nationalities, including Americans, British, Canadians, Australians and New Zealanders.

04 A variety of amenities and activities!

A variety of convenience facilities such as swimming pool, gym, golf driving range, basketball court, soccer field, badminton court, mini mart, etc. and various activities are available every weekend.

04 CURRICULUM



	COURSE	A CLASS = 45min			TOTAL
		PHI TEACHER		NATIVE TEACHER	
		1 on 1	GROUP	1 on 1	
ESL FOR FAMILY	JUNIOR ESL	5	1	-	6
	JUNIOR ESL NATIVE	3	1	2	6
	WE KINDERGARTEN	-	8	-	8
	GUARDIAN ESL	3	1	-	4
ESL FOR ADULT	ESL 4 + NATIVE	4	1	1	6
	ESL 5 + NATIVE	5	1	1	7
	ESL 6 + NATIVE	6	1	1	8
	NATIVE MIX ESL	3	1	3	7
	NATIVE + IELTS/TOEIC/BUSINESS	4	1 (ESL)	2	7
GOLF	ESL + GOLF	3	1	GOLF LESSON + SELF PRACTICE	4 + 3
	ESL + GOLF & ROUND	3	1	GOLF LESSON + FIELD LESSON + SELF PRACTICE	4 + 3

We offer a variety of courses under three major categories: Family / Adult / Golf.

Group classes are run on a 1:5 basis. (maximum 1:6)

After consulting on site, it is possible to add or change classes with a Native speaker/Filipino teacher.

Golf Round course is included the field lessons.

04 CURRICULUM ADULT COURSE

COURSE	A CLASS = 45min				TOTAL
	PHI TEACHER		NATIVE TEACHER		
	1 on 1	GROUP	1 on 1	GROUP	
ESL 4 + NATIVE	4	1	1	-	6
ESL 5 + NATIVE	5	1	1	-	7
ESL 6 + NATIVE	6	1	1	-	8
NATIVE MIX ESL	3	1	3	-	7
NATIVE + IELTS/TOEIC/BUSINESS	4	1 (ESL)	2	-	7

● This is an adult program that can be taken by high school students and above. All courses included native 1:1 class.



The biggest feature of WE ACADEMY's ESL course is that it guarantees 1:1 lessons with a native speaker no matter which course you choose. Classes are taught by teachers assigned to each subject, such as speaking, writing, listening, grammar, and pronunciation. Individual classes are programmed to be connected to each subject so that they can use English as a second language more appropriately.

The NATIVE MIX course provides 3 hours of native-speaking lessons per day, and teachers from the US, UK, Australia, and Canada provide opportunities to experience various pronunciations and cultures. Students who are preparing for a working holiday, an overseas internship, or studying abroad are strongly recommended to take the native course.

In the special course, IELTS, TOEIC test preparation classes and BUSINESS classes are provided. This course with native English speakers provides 7 hours of classes per day, depending on the student's level. Prepare for the actual exam through mock exams and continuously check your learning status.

04 CURRICULUM GOLF COURSE

COURSE	A CLASS = 45min				TOTAL
	PHI TEACHER		NATIVE TEACHER		
	1 on 1	GROUP	1 on 1	GROUP	
ESL + GOLF	3	1	GOLF LESSON + SELF PRACTICE		4 + 3
ESL + GOLF & ROUND	3	1	GOLF LESSON + FIELD LESSON + SELF PRACTICE		4 + 3

- After taking 4 hours of English class a day, you will be given lessons and practice at the WE ACADEMY golf driving range.
- Golf lessons are conducted by a Filipino golf instructor (with a professional license). From beginners to advanced players, we offer golf lessons according to each individual level.
- Lessons are provided for 60 minutes per session, 5 times a week. (Mon to Fri)
- For beginners who are new to golf, golf clubs provided by the academy can be used. However, it is highly recommended for intermediate players and above to use their own golf clubs.
- Golf Round Course includes field lessons and is provided once a week. We usually go to the golf course on Wed or Sat mornings, with 1-3 students.
 - * Included: Lesson fee, transportation fee
 - * Not included: Golf course fee (green fee, caddy fee, cart fee)
 - (Golf instructors with professional licenses do not pay golf course fees.)

- ※ The golf course fee for field lessons varies depending on the golf course and season. (Average cost in off-season: around 100\$, green fee 60\$, caddy fee 10\$, 30\$ per cart)
- ※ Some golf courses also require golf instructors with professional licenses to pay green fees. In this case, the student must pay.
- ※ Field lessons may be held on Saturdays depending on circumstances.



04 CURRICULUM JUNIOR COURSE

- It can be selected from the age of 4 to under high school, and is a program prepared by WE ACADEMY for families planning to study abroad with their children.



From elementary school students to middle school students

These courses are offered for parents and young students of English to help them improve their general English language skills characterized by customized classes based on the level test results of Speaking, Listening, Writing, Reading and Vocabulary. Recommended also for students as a preparatory course for their next school level or those who aim to study abroad. And the objective of this course is to improve students English level as well as English ability and skills based on their study period.

Preschoolers can take WE English Kindergarten classes.

COURSE	PHI 1:1	PHI GROUP	NATIVE 1:1	SELF-STUDY (selectable)	TOTAL
JUNIOR ESL	5H	1H	-	2H	6+2H
JUNIOR ESL NATIVE	3H	1H	2H	2H	6+2H



04 CURRICULUM WE KINDERGARTEN

Currently, WE ACADEMY KINDERGARTEN is set up and operated inside the academy.

Classes start at 8:50 am and end at 4:15 pm.

Meals are served in the dining room with parents, and snacks are provided once in the morning and once in the afternoon.



WE KINDERGARTEN DAILY SCHEDULE (for 4-6 years)

	MON	TUE	WED	THU	FRI
08:00	TEACHER'S PREPARATION TIME				
08:50	CIRCLE TIME				
	MUSIC, DANCE AND LANGUAGE				
09:40	SHORT BREAK TIME				
	STORY	ARTS	SCIENCE	ARTS	VALUES
10:30	SNACK TIME				
11:20	EDUCATIONAL VIDEO/STORIES				
	SHORT BREAK TIME				
12:00	GROUP ACTIVITY (EDUCATIONAL GAME)				
	LUNCH TIME 12:00 ~ 13:00				
13:00	INDOOR / OUTDOOR ACTIVITY (EXPERIMENTS / GARDENING)				
13:50	RECREATIONAL / ART&CRAFTS				
14:40	SNACK TIME				
15:30	LANGUAGE	MATH	LANGUAGE	MATH	LANGUAGE
	PE TIME				

※ Class ends at 4:15 PM



05 WE DAILY SCHEDULE

🕒 First day schedule

TIME	SCHEDULE
07:00~08:20	Breakfast
08:00~08:45	Level Test
08:50~09:35	
09:40~10:25	Orientation
10:30~11:15	
11:20~12:05	
11:30~12:45	Lunch
13:00~13:45	SM MALL (money exchange, shopping, etc.)
13:50~14:35	
14:40~15:25	
15:30~16:15	
16:20~17:05	Check Class Schedule, Payment
17:30~18:30	Dinner

🕒 Regular day schedule

TIME	SCHEDULE
07:00~08:20	Breakfast
08:00~08:45	1 st class
08:50~09:35	2 nd class
09:40~10:25	3 rd class
10:30~11:15	4 th class
11:20~12:05	5 th class
11:50~12:50	Lunch
13:00~13:45	6 th class
13:50~14:35	7 th class
14:40~15:25	8 th class
15:30~16:15	9 th class
16:20~17:05	10 th class
17:30~18:30	Dinner
19:00~19:45	Self Study
19:50~20:35	Self Study
21:00~	Sleep

※ This schedule is an example, and the schedule may change slightly depending on local circumstances.

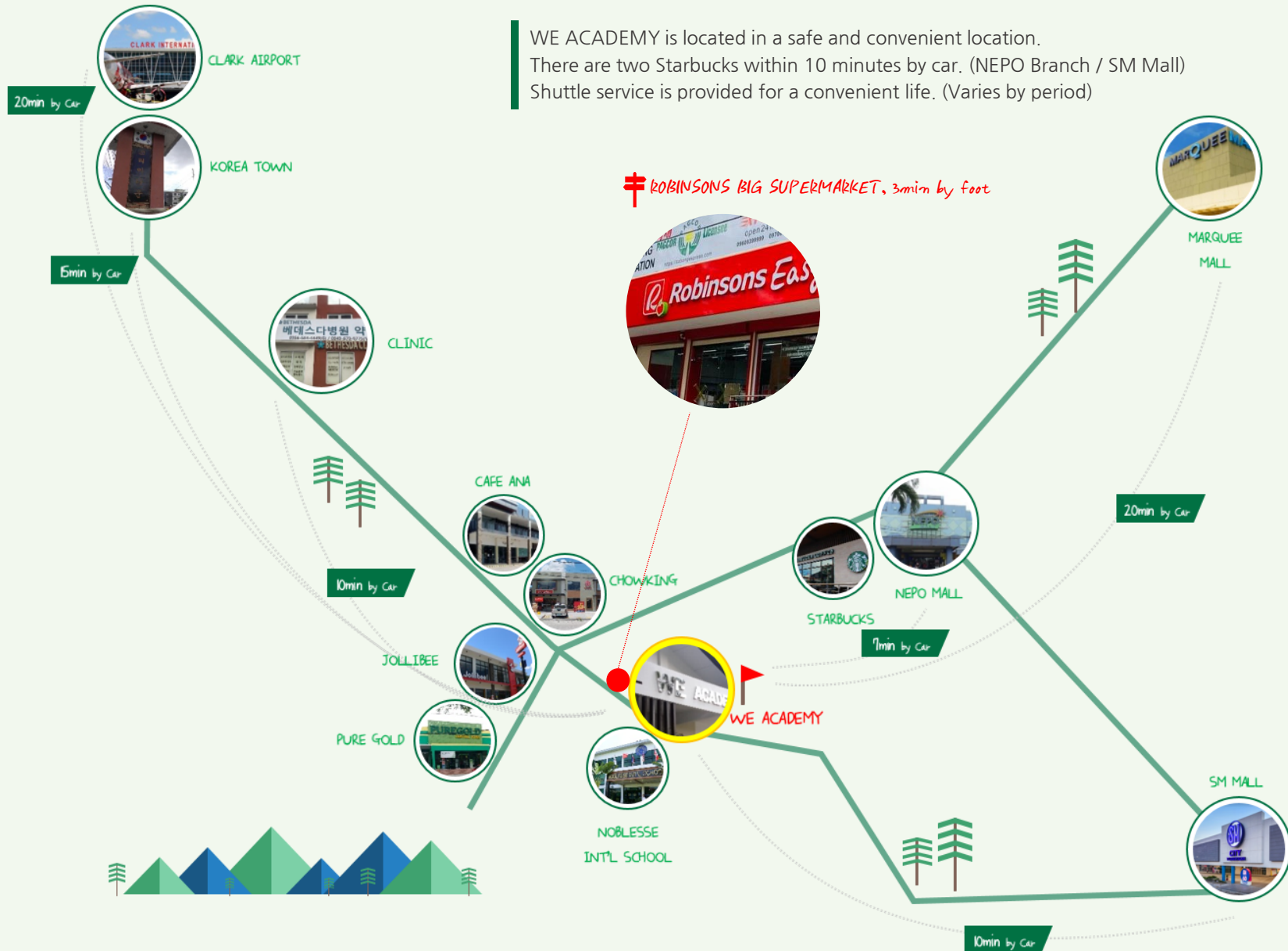


06 WE ACADEMY Facility information



06 WE ACADEMY Environment

WE ACADEMY is located in a safe and convenient location. There are two Starbucks within 10 minutes by car. (NEPO Branch / SM Mall) Shuttle service is provided for a convenient life. (Varies by period)



07 MEAL



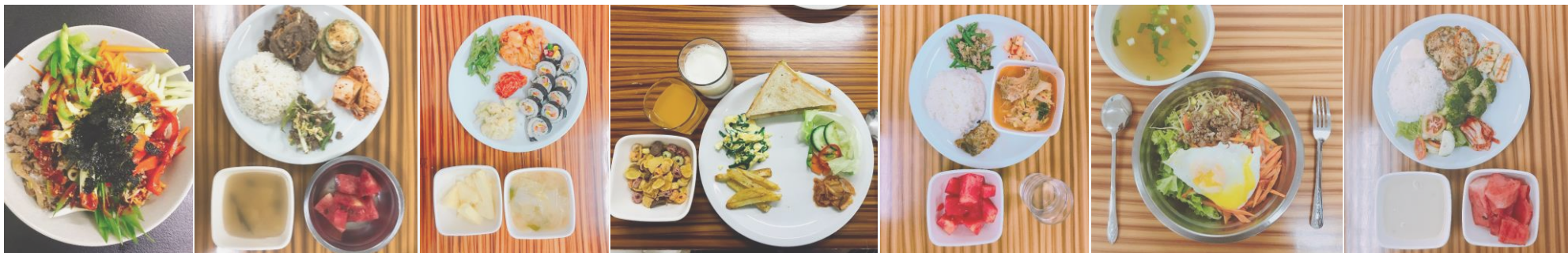
We serve delicious and nutritious meals daily.

Fresh fruits are provided at least once a day, and a variety of well-balanced meals including vegetables and meat are provided.

The cafeteria maintains a hygienic environment.

Weekday Breakfast	Weekday Lunch	Weekday Dinner	Weekend or Holiday Brunch	Weekend or Holiday Dinner
7:00~8:00	11:50~12:50 (BUSY SEASON: 11:20~13:00)	17:30~18:30 (BUSY SEASON: 17:30~19:00)	09:30~12:00	17:30~18:30 (BUSY SEASON: 17:30~19:00)

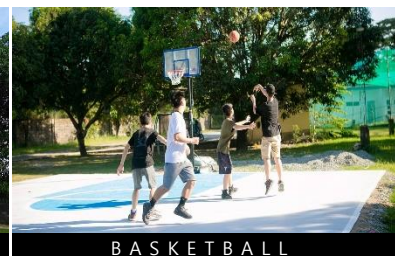
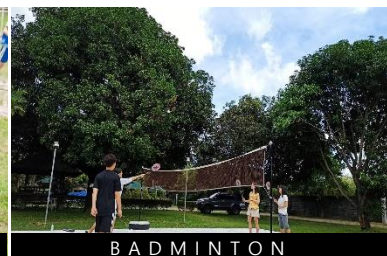
3 meals a day on weekdays, 2 meals a day on weekends/holidays



08 ACTIVITIES (at school)

- You can enjoy various activities such as swimming and golf using the internal facilities of WE ACADEMY.
- However, activities may not be provided depending on the period as they are opened irregularly with external instructors.
- For some activities, advance reservations and payment are required to proceed, so please inquire in advance.
- Several activities are opened and operated mainly during peak season. However, golf lessons are available all year round.
- Depending on the type of use, a fee is charged. Please inquire at the local office for the usage fee and details.

※ For beginners who are new to golf, golf clubs provided by the academy can be used. If you are intermediate or above, be sure to bring your own golf club.

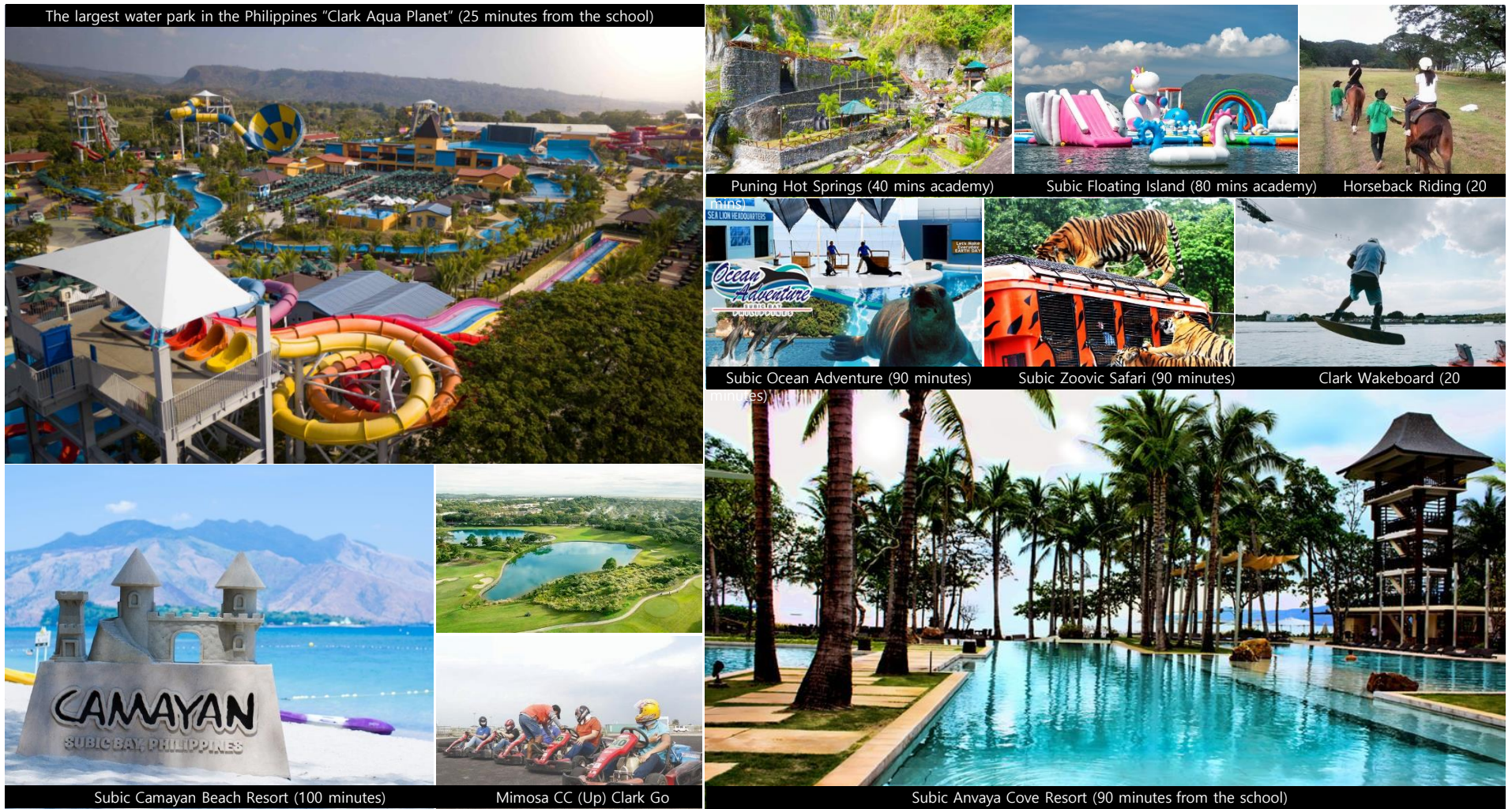


※ All activity classes are taught by Filipino instructors, and program fees vary depending on the season.

※ All activity classes are conducted by external instructors, so they may not be conducted depending on local circumstances.

08 ACTIVITIES (outside)

- In the Clark area where WE ACADEMY is located, you can enjoy a variety of travel and activities on weekends and holidays.
- Information and reservations are possible through the travel agency 'Wow Pampanga', the academy partner.



08 FACILITY (OUTSIDE VIEW)



08 FACILITY (SCHOOL BLDG.)



SCHOOL BLDG. 2



SCHOOL BLDG. 1



SCHOOL BLDG. 1 GATE



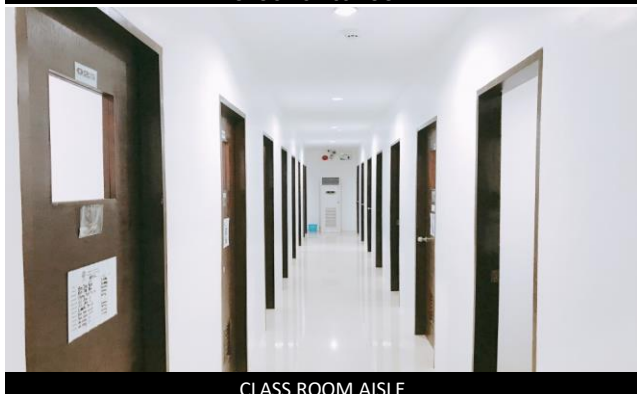
GROUP CLASS ROOM



CLASS ROOM



SCHOOL BLDG. 2



CLASS ROOM AISLE



1:1 CLASS ROOM



GROUP CLASS ROOM

08 FACILITY (DORMITORY SINGLE / DOUBLE ROOM)



08 FACILITY (DORMITORY TRIPLE / QUAD)



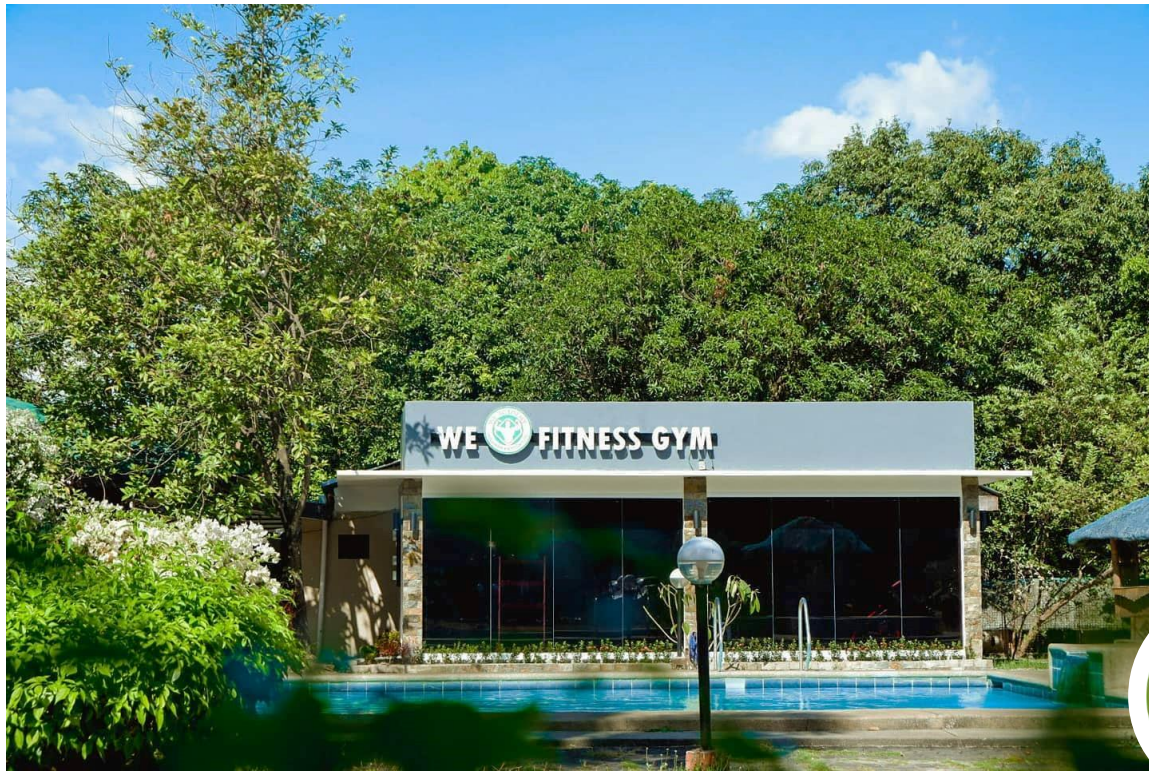
08 FACILITY (HOUSE FOR FAMILY 3~4pax)



- **There is 1 private room.**
- It is a separate building, located between dormitory building D and lecture building 2.
- Suitable for families of 3-4 people
- Composition of 1 queen size bed + 1 super single bed
- You can cook your own food
- 2 beds, air conditioner, bookshelf, dining table set for 4 people, sofa/table, TV (you can watch YouTube), hot/cold water dispenser, Microwave oven, induction, coffee pot, tableware/cooking set, refrigerator, closet, 2 sets of personal desks for study, mirror
- Cost: \$850 per person for 4 people / \$1,000 per person for 3 people



08 FACILITY (FITNESS GYM)



08 FACILITY (OTHERS)



GOLF DRIVE RANGE



POOL



FOOT BALL AREA



PLAY AREA



OFFICE



MINI MART



BASKET BALL COURT / BADMINTON COURT



CANTEEN



GAZEBO



CAFETERIA

10 EXPENSES

PROGRAM FEE

SORT	COURSE	COST/4W (USD)
ESL FOR JUNIOR	JUNIOR ESL	850
	JUNIOR ESL NATIVE	1,050
	WE KINDERGARTEN	1,150
	GUARDIAN ESL	650
ESL FOR SENIOR	ESL 4 + NATIVE	800
	ESL 5 + NATIVE	900
	ESL 6 + NATIVE	1,000
	NATIVE MIX ESL	1,100
	NATIVE + IELTS/TOEIC/BUSINESS	1,100
GOLF	ESL + GOLF	1,100
	ESL + GOLF&ROUNGE	1,600

DORMITORY FEE

TYPE	COST/4W (USD)
SINGLE	1,000
TWIN	850
TRIPLE	750
QUAD	650

LOCAL COST

SORT	AMOUNT(PHP)	NOTE
DEPOSIT	3,000	• Cost per person, returned upon check-out
SSP	6,800	• Special Study Permit
ACR I CARD	3,500	• Alien Certificate of Registration • Required for staying over 8 weeks (59 days or more)
TEXT BOOK	250~500	• Cost per book, varies depending on individual level/course
UTILITIES	2,000/4W	• Laundry, cleaning, drinking water, shared electricity, etc. • 500 pesos per week
ELECTRICITY FEE	20/KW	• According to the electricity meter installed in each room • If you have roommates, pay 1/N
VISITOR COST	1,500/night	• Limited to immediate family members during family course • Up to 5 nights, meals included • Principle of sharing the same room, however, if possible, separate rooms can be used, 2,500 pesos per night
ID	300	
PICK-UP(CLARK)	1,500	• Cost per family (250 pesos per person for more than 4pax) • individual 1,000 pesos
PICK-UP(MANILA)	5,500	• Cost per family (500 pesos per person for more than 4pax) • individual 4,500 pesos
EXTRA NIGHT	1,500/night	• After the period is over, if possible, one additional night • Cost per person, including meals (single room - 2,500 pesos)
VISA EXTENSION		<ul style="list-style-type: none"> • 1st extension 08 weeks (059 days) - 3,800 pesos • 2nd extension 12 weeks (089 days) - 5,000 pesos • 3rd extension 16 weeks (119 days) - 3,500 pesos • 4th extension 20 weeks (149 days) - 3,500 pesos • 5th extension 24 weeks (179 days) - 3,500 pesos

11 SCHOOL INFORMATION

SORT	NOTE
NAME	WE ACADEMY WORLDWIDE EXCELLENCE, INC.
ADDRESS	Block 7 Lot 8 Fil-Am Friendship Highway, Angeles City, 2009 Pampanga, Philippines
LAND AREA	11,879m ²
FLOOR AREA	3,220m ²
SCHOOL BLDG. CAPACITY	2units, 120people
KINDERGARTEN. CAPACITY	1units, 30people
DORMITORY. CAPACITY	6units, 124people
1:1 CLASS ROOM	55rooms
GROUP CLASS ROOM	10rooms
NUMBER OF TEACHERS	Summer/Winter season 55(Filipino) & 7(Natives)
FACILITIES	Kindergarten, administrative/teacher office, restaurant, cafeteria, canteen, golf driving range, gym, swimming pool, basketball court, badminton court, futsal court, etc.
SSP	AAFS NO. JHM-17-TVET-258
TESDA	NTR-201603540013



SSP



TESDA



LIFE OF WE ACADEMY





THANK YOU

FOR YOUR COOPERATION