

For Agency

CIJ Academy&School

LILLOAN CIJ EDUCATION INC.,

08-302 Purok Mabini, Poblacion Liloan, Cebu, Philippines.

Tel. 032-424-1299 / e-Mail. cijacademy@hanmail.net



History



2003 ~ 2011

- 2003 (July)
Junior School OPEN!
- 2003 (December)
Junior and Family Camp
- 2008 (January)
Created a business contract with
Jo Seon Seng private School
- 2008 (December)
12th Junior and Family Camp
- 2010 (December)
launched E-learning (Online)
18th Junior and Family Camp
- 2010 (December)
Created a business contract with Amway Cop.

2012 ~ 2013

- 2012 (September)
CIJ Academy OPEN!
- 2012 (December)
20th Junior and Family Camp
- 2013 (December)
21th Junior and Family Camp
- 2013 (January)
CIJ was Published in a Korean Newspaper
for helping the less fortunate Kopinos

2014 ~ 2017

- 2014 (December)
23th Junior and Family Camp
SPARTA Campus OPEN!
- 2016 (December)
27th Junior and Family Camp
Japanese Junior started to join Camp
- 2017 (July)
28th Junior and Family Camp
Chinese Junior started to join Camp
- 2017 (December)
29th Junior School and Family Camp

2018 ~ Present

- 2018 (July)
30th Junior and Family Camp
Taiwanese Junior started to join Camp
- 2018 (September)
PREMIUM Campus
expansion and relocation
- 2019 (July)
32th Junior and Family Camp
Japanese,Chinese,Taiwanese Juniors
joined Camp
- 2019 (December)
33th Junior and Family Camp
Japanese,Chinese,Taiwanese Juniors
joined Camp

Our VISION

CIJ Academy&School always strives to develop current English education trends and new student services through the following vision.

VISION



DEVELOPMENT 03



LEARNING
ENVIROMENT 02



GLOBAL
COMMUNICATION 01

GLOBAL COMMUNICATION

To continue serving Asian students and reach out to other countries around world.



LEARNING ENVIROMENT

Providing the best environment for studying English.



DEVELOPMENT

Developing new programs for teaching and learning that fit students needs by adapting the latest trend.

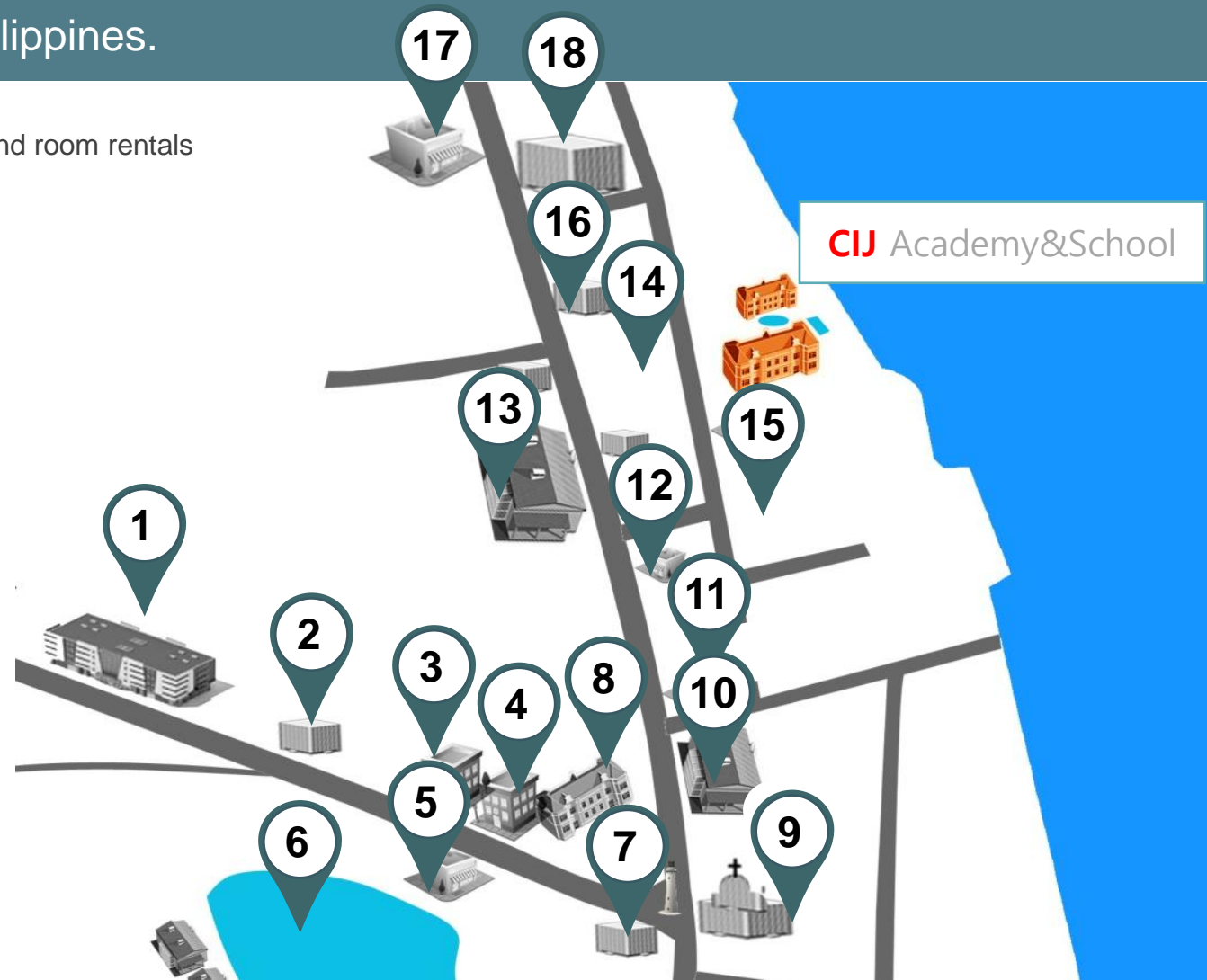


Environment

08-302 Purok Mabini, Poblacion Liloan, Cebu, Philippines.

- 01. SM Mall Consolacion
- 02. Atlantis Food Park
- 03. Police Station
- 04. Fire Station
- 05. Seven Eleven
- 06. Papa kit's Marina & Fishing Lagoon
- 07. San Jose Bakeshop
- 08. Liloan Municipal Hall
- 09. San Fernando Parish Church
- 10. La Consolacion College
- 11. Taching's Eatery
- 12. Thai Massage & Daddys Joe Lechon Manok
- 13. Gaisano Mall Liloan
- 14. Jolilbee

- 15. Nakada House space and room rentals
- 16. Rose Pharmacy
- 17. Titay's
- 18. Old Liloan Market





Highlights of CIJ

Supporting your success with CIJ Academy&School

Strengths of CIJ

1 THE BEST VIEWS AND THE MODERN RESORT FACILITIES

It has a tropical resort-type facility with all rooms on the second floor facing the ocean views, and the rooms on the first floor are garden views.

2 LOCATED MORE SAFE & MORE PEACEFUL AREA

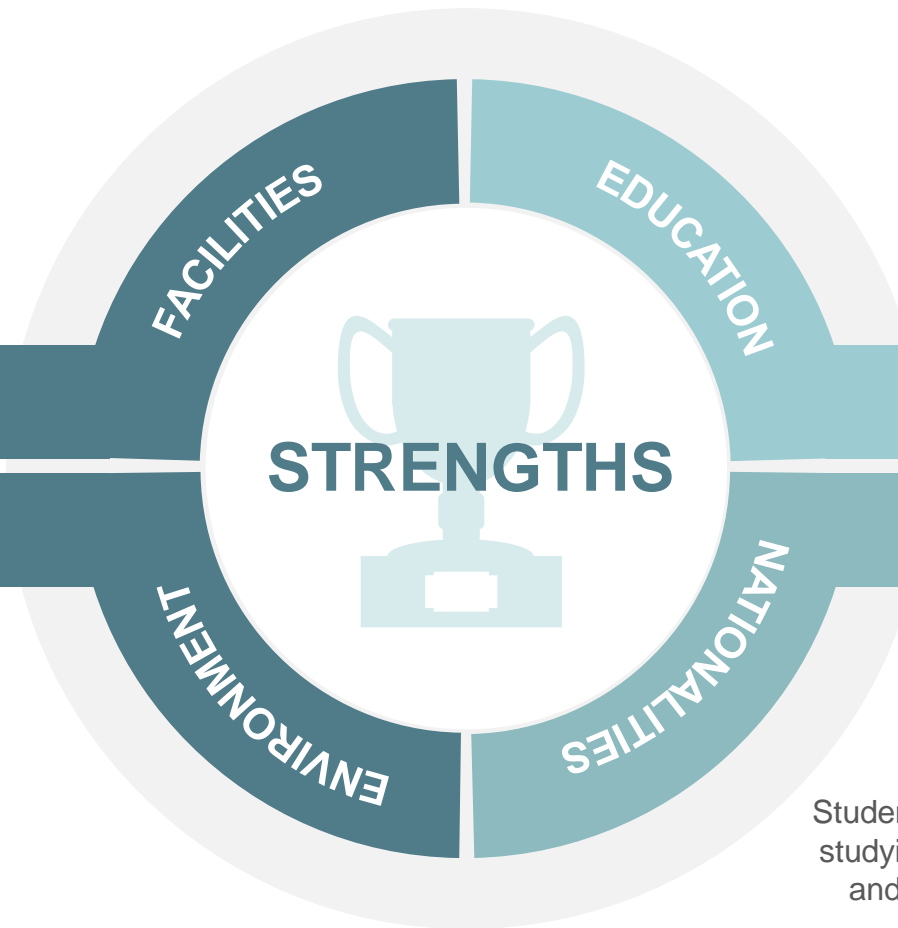
We are located in a clean area without any noxious environment. It is a safer and more peaceful area than Cebu City.

3 DETAILED ENGLISH EDUCATION MANAGEMENT SYSTEM

CIJ Academy&School manages academic affairs through a systematic program. Through this, we can help students reach their goals more easily with the optimum learning outcomes during the language study period.

4 VARIOUS NATIONALITIES STUDENT

Students of various foreign nationalities are always studying. They can have the chance to experience and learn the culture of the other countries while staying with students of various nationalities.



“ THE BEST VIEWS AND THE MODERN RESORT FACILITIES



CIJ is located in Liloan City, a quiet and safe suburb of Cebu City. The campus looks and feels like a resort: you can see the ocean horizon right at the 2nd floor of the campus. The campus grounds are beautifully landscaped, with palm trees and various tropical plants combined with a wide, lush lawn. The campus doesn't feel like you're in school – it feels like you're on vacation!



“LOCATED MORE SAFE & MORE PEACEFUL AREA

A safer and more comfortable language training life

CIJ Academy&School is located in Liloan City, about 10 km from Cebu City. There are no entertainment cultures that attract students (casino, KTV, etc.) in a quiet atmosphere, so you can concentrate more on your studies.

This is a safer and more peaceful area than Cebu City. There are various amenities such as shopping malls, massage shops, pharmacies, convenience stores, bakeries, police stations, fire stations, city halls, and beaches. Therefore, student can have a safer and more comfortable language training life in CIJ Academy&School.

“
In a Clean Area without
Any Noxious Environment





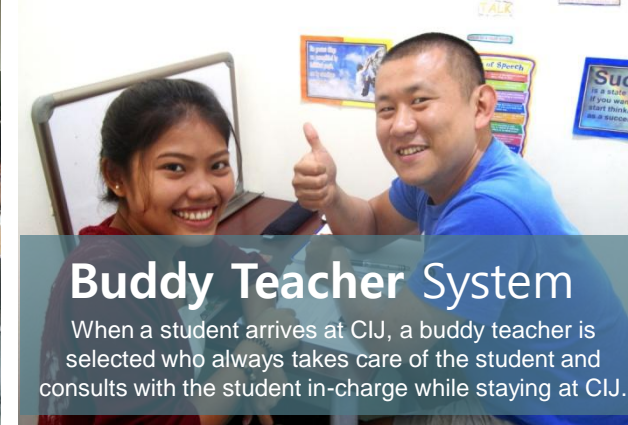
E-Police System

There are police in CIJ. They are the E-police. Teachers become E-police officers and check students who speak languages other than English. The E-police will really impose penalty and issue penalty tickets. Be careful ! You must only use English in CIJ.



DWM Test System

Every Day, every Week, and every Month, tests are conducted to check students' progress and improve their skills.



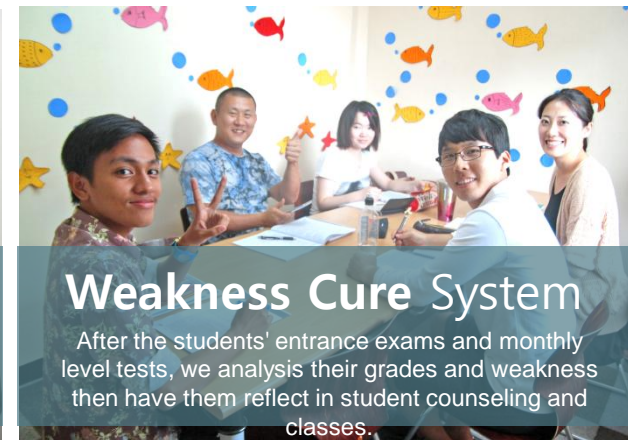
Buddy Teacher System

When a student arrives at CIJ, a buddy teacher is selected who always takes care of the student and consults with the student in-charge while staying at CIJ.



SD Learning System

Every Day, every Week, and every Month, tests are conducted to check students' progress and improve their skills.



Weakness Cure System

After the students' entrance exams and monthly level tests, we analysis their grades and weakness then have them reflect in student counseling and classes.

“ DETAILED ENGLISH EDUCATION MANAGEMENT SYSTEM

CIJ Academy&School manages academic affairs through a systematic program. Through this, we can help students reach their goals more easily with the optimum learning outcomes during the language training period.

Nationality

Signed Contracts

Various Countries Agency

CIJ has signed contracts with agents from various countries, and students of various nationalities who are studying together.

In CIJ, students of various nationalities can live and study together. Many students from more than 10 countries have already studied English and returned to their countries. Students of various foreign nationalities are always studying, and they can have a chance to experience and learn the culture of the other countries while staying with students of various nationalities.

Various Nationalities

Student



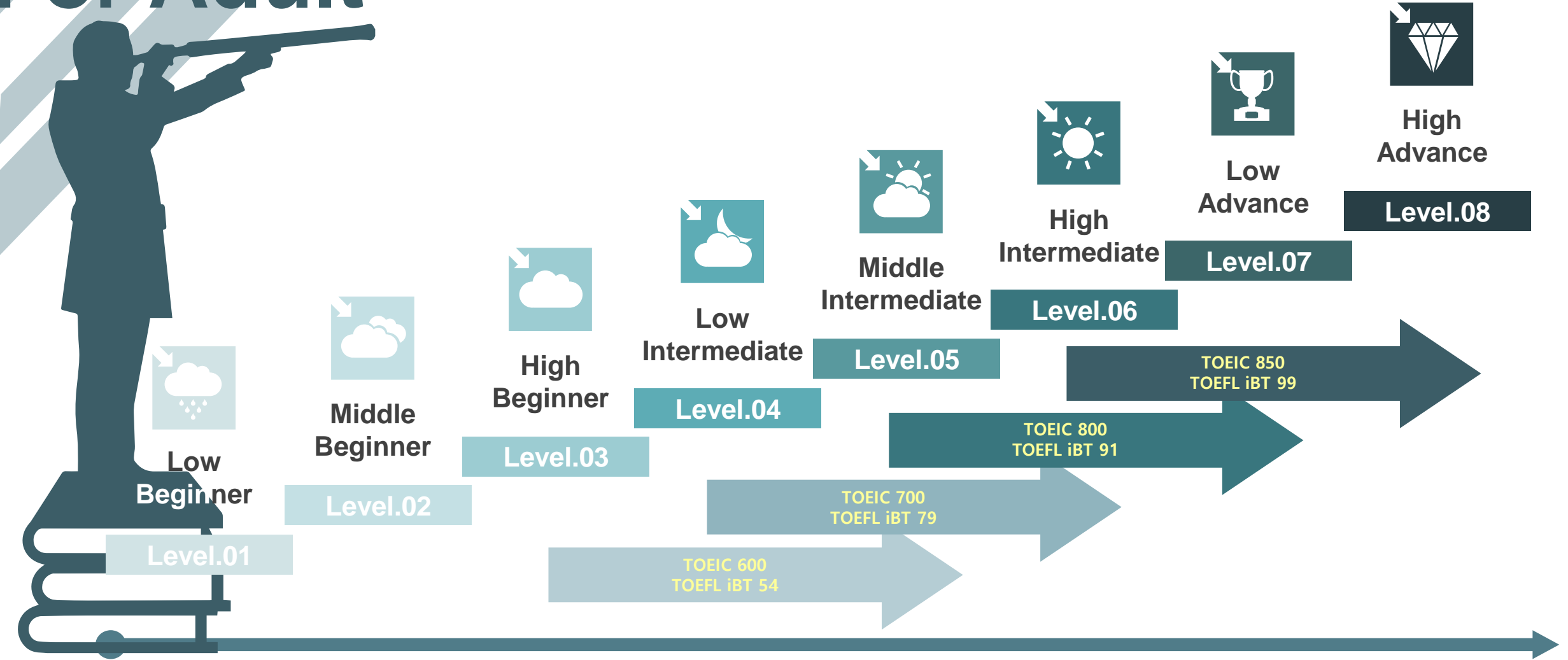
A group of approximately ten young people, likely students, are captured in mid-air, jumping joyfully in front of a large, two-story yellow school building. The building features arched windows and a red-tiled roof. In the foreground, a swimming pool with blue water and a metal ladder is visible. The students are dressed in casual summer attire, including t-shirts, dresses, and shorts. Some are making peace signs with their hands. The overall atmosphere is one of happiness and energy.

Our Curriculum

Supporting your success with CIJ Academy&School

Level System

For Adult



Time Table

For Adult Student

Time	Class	Friday	Note
06:30 ~ 07:20	Vocabulary Test	06:30 ~ 07:20	
07:20 ~ 07:50	Meal time	07:20 ~ 07:50	
08:00 ~ 08:50	1st Class	08:00 ~ 08:40	⌘ Regular Class - Each class is 50 minutes and has a 5minute break in between - Students can choose their classes from 1~10 according to their curriculum - On a daily basis, there are vocabulary and idiom tests with Sparta Course student - Mandatory self study
08:55 ~ 09:45	2nd Class	08:45 ~ 09:25	
09:50 ~ 10:40	3rd Class	09:30 ~ 10:10	
10:45 ~ 11:35	4th Class	10:15 ~ 10:55	
11:40 ~ 12:30	5th Class	11:00 ~ 11:40	
12:30 ~ 13:20	Meal time	12:30 ~ 13:20	⌘ Types of Class One-on-one class/Native Class/ Small Group class
13:30 ~ 14:20	6th Class	11:45 ~ 12:25	
14:25 ~ 15:15	7th Class	13:30 ~ 14:10	⌘ Vocabulary Test & Sentence Test - Sparta Course student must join these tests - Students develop their English Skills - There are penalties if students fail the test
15:20 ~ 16:10	8th Class	14:15 ~ 14:55	
16:15 ~ 17:05	9th Class	15:00 ~ 15:40	
17:10 ~ 18:00	10th Class	15:40 ~ 16:20	⌘ Self-Study - Students have to join self-study time everyday excluding the weekends and holidays
18:00 ~ 18:50	Meal time	18:00 ~ 18:50	
19:00 ~ 19:50	Self Study	None	
20:00 ~ 20:50	Sentence Test	None	

Notice

- ⌘ Classes are subject to change due to unexpected circumstances.
- ⌘ Every last Friday of the month a level test will be given, Regular classes will be suspended for the level test
- ⌘ The holidays do not have lessons but for the guarantee, Special classes can also be provided
- ⌘ **Every Friday, the 50-minute class is shortened by 40minutes.**
- ⌘ Small Group classes are held for up to 3 to 5 people.
- ⌘ Native Group classes are held for up to 8 to 10 people.
- ⌘ Semi-Sparta and Family student Can go out until 21:00 after the class
- ⌘ Club activities are held after class every Friday.

SEMI-SPARTA COURSE PROGRAM

Course	One on One	Small Group	Native Group	Self Study	Voca & SentenceTest
ESL 4 Course	4 times				
Basic Speaking Course	4 times	3 times	1 time	1 time	
Power Speaking Course	5 times	2 times	1 time	1 time	

■ Class Type

- Duration : 1 to 24 weeks
- 50 minute classes with a 5 minute rest in between
- Course start : Every week, on a Monday
- Any Level of student can join this course

During the Philippine language study period, you don't only study English, but also experience various things. You can use various places such as shopping malls, restaurants, and massage shops, and meet various people outside CIJ and communicate using English you learned in class. These experiences will improve your English communication skills. The CIJ Semi-Sparta Course Program allows you to go out until 21:00 after class, so you can have these experiences.



SPARTA COURSE PROGRAM

Course	One on One	Small Group	Native Group	Self Study	Voca & SentenceTest
Sparta 5 Course	5 times	2 times	1 time	1 time	2 times
Sparta 6 Course	6 times	2 times	1 time	1 time	2 times

▪ Class Type

- Duration : 1 to 24 weeks
- 50 minute classes with a 5 minute rest in between
- Course start : Every week, on a Monday
- Any Level of student can join this course

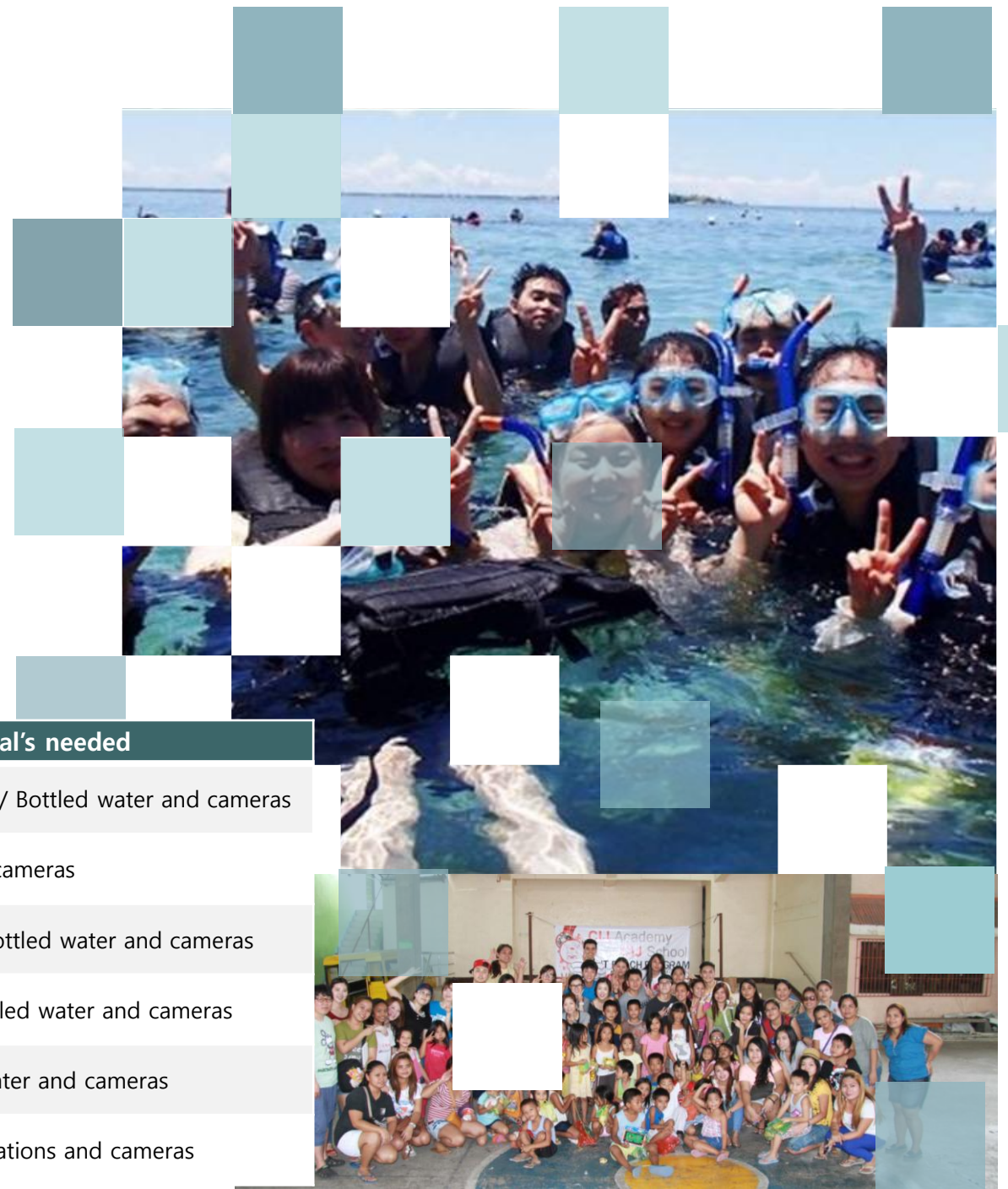
Are you thinking about how much your English will improve because of the short language study period? With CIJ's Sparta Course Program, you can improve your English skills with more than 11 hours of Spartan classes a day, and with words and sentence tests that take place twice a day. Stay with the CIJ SPARTA Program, which focuses only on studying during weekdays and is off on weekends.



WEEKEND ACTIVITY PROGRAM

- Various activities with students are held from 9 a.m. every Saturday.
- You can attend the activity by applying to the office staff by 5 p.m. every Wednesday.
- Activity is conducted when there are at least 8 people attending, and will automatically be canceled if the minimum number of people is not met.

Activity Type	Cost	Places and material's needed
Religious activity in the Philippines	Each admission and transportation	Magellan Cross / St. Nino Cathedral / Bottled water and cameras
Historical activity of the Philippines	Each admission and transportation	Fort San Pedro / Bottled water and cameras
Cultural activity of the Philippines	Each admission and transportation	The Museo Sugbo, Casa gorodo / Bottled water and cameras
Experience a resort in the Philippines	Each admission and transportation	Plantation bay resort day-tour / Bottled water and cameras
Experience the Philippines Sea	Each admission and transportation	an Ireland hopping tour / Bottled water and cameras
volunteer work	Contributed goods preparation costs	Barangay Office or Orphanage/ Donations and cameras



Family & Junior Program

Supporting your success with CIJ Academy&School



“About 20 years of knowhow and expertise in supervising junior students management is carried out through a **systematic methodology**.”

Safety System

CIJ is safe and secure. Staff and students are given safety Education. People can only enter through the front gate, where a security guard is on duty 24hours a day.

Weakness Cure System

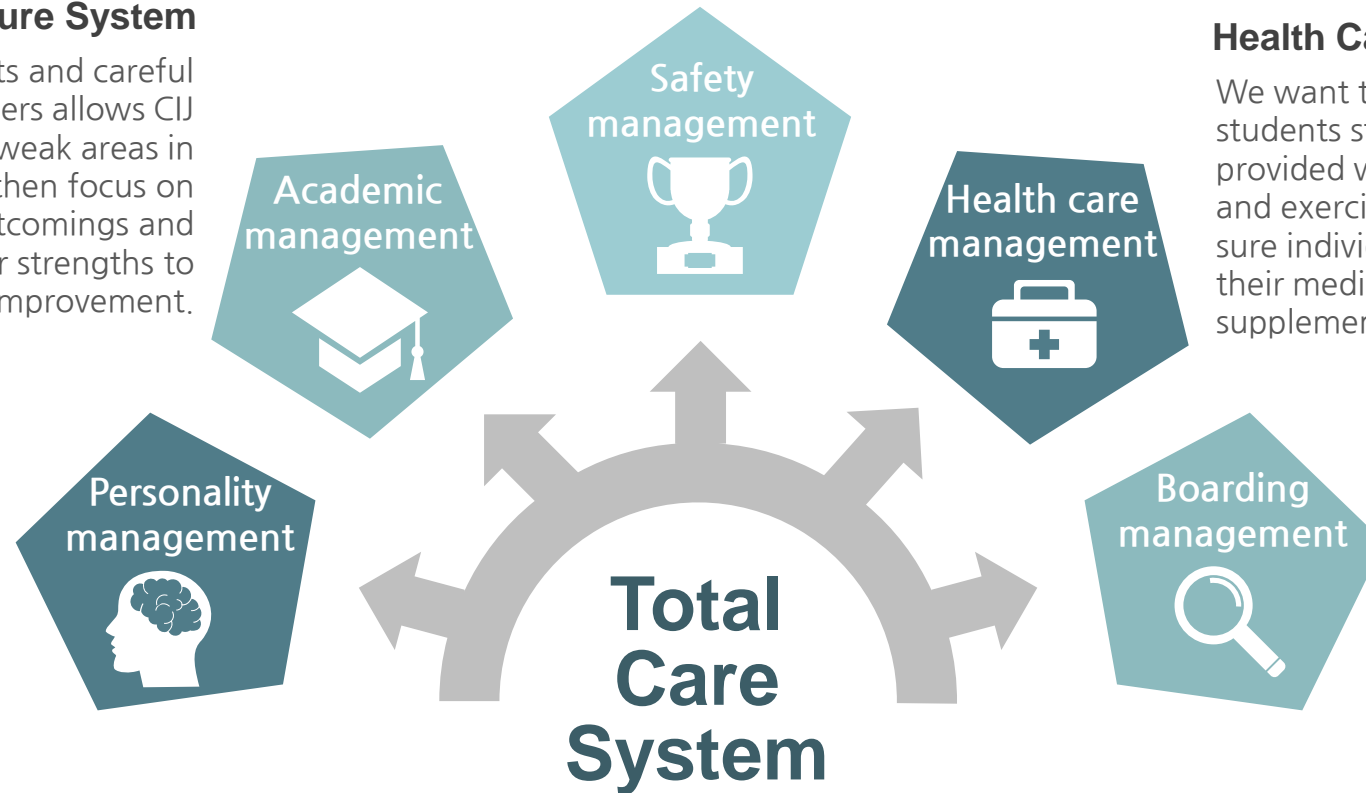
Weekly level tests and careful analysis by our teachers allows CIJ to find students' weak areas in English. We can then focus on these shortcomings and maximize their strengths to ensure improvement.

Health Care System

We want to make sure our students stay healthy as well as provided with nutritious food and exercise. We also make sure individual students take their medicines and supplements.

Mentoring System

In charge teachers carefully mentor our students, guiding the development of their character by emphasizing values such as cooperation and achievement.

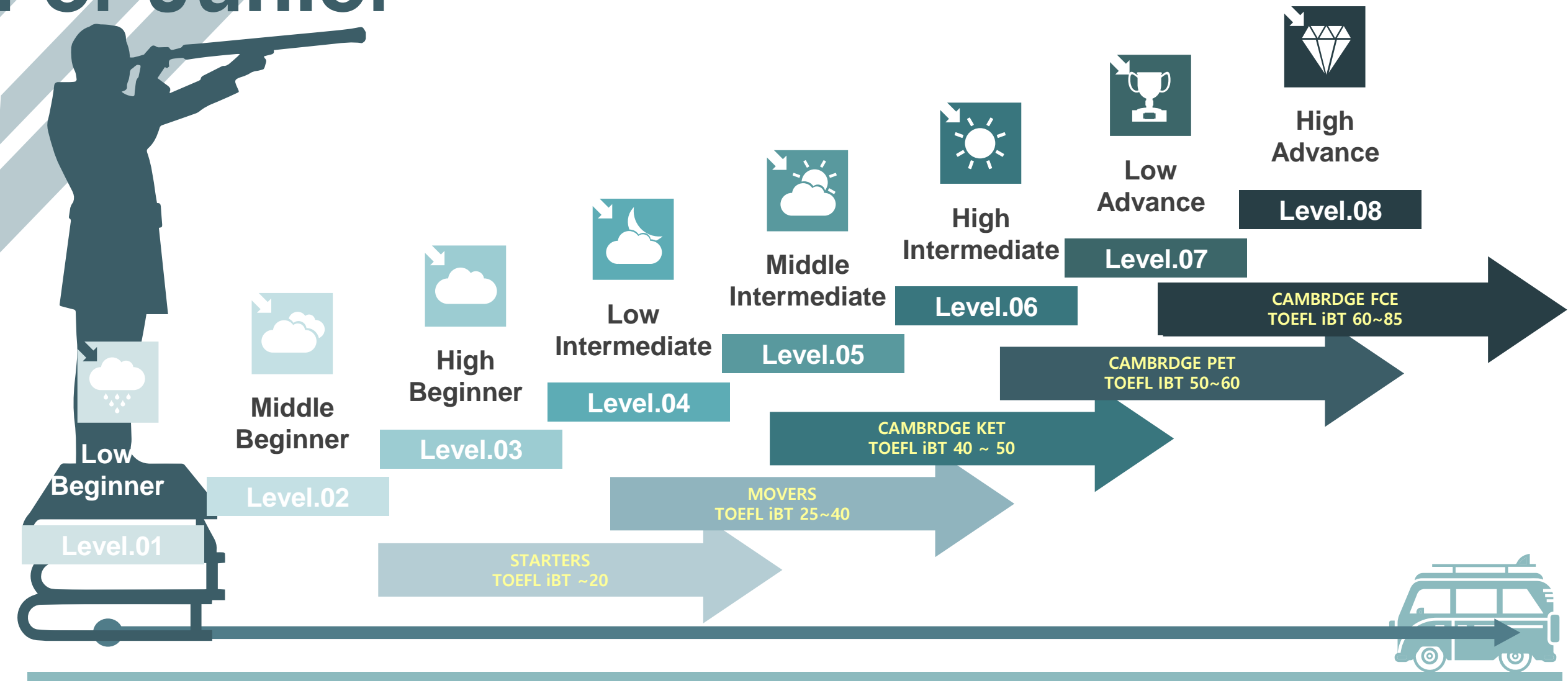


Every1 Care System

Through the "Every1 care system" CIJ carefully monitors our students' lives. Our teachers' and staffs' first priority is to make sure our students are well taken care of.

Level System

For Junior



Time Table

Time	Class	Friday	Saturday	Sunday	Note
06:50 ~ 07:00	Morning Exercise	06:30 ~ 07:20	<div>Activity orientation</div> <div>Outdoor activity & Lunch</div> <div><div><div>▪ Plantation-bay Resort +ResortBuffet</div><div>▪ Safari Adventure Park + Lunch dine out</div><div>▪ City Tour + Lunch dine out</div><div>▪ J-park Resort+Resort Buffet</div><div>▪ Westown lagoon +Lunch dine out</div><div>▪ El-Salvador Resort + Resort Buffet</div><div>▪ Maribago Bluewater + Resort Buffet</div><div>▪ Ocean Park Cebu + Lunch dine out</div><div>❖ Can be adjusted</div></div><div>Personal maintenance & Rest</div></div>	<div>Breakfast</div> <div>Level Test</div> <div>Lunch</div> <div>Humanism Education & Indoor Activity</div> <div>Study Check-up</div> <div>Check what you studied for a week(Vocabulary, Sentence, English Essay, Books)</div> <div>Dinner</div> <div>Watching Movie</div> <div>Writing Essay</div> <div>Roll call & Go to bed</div>	<div>※ Regular Class</div> <div>- Each class is 50 minutes and has a 5minute break in between</div> <div>- Every Friday, the 50-minute class is shortened by 40minutes.</div> <div>- Students can choose their classes from 1~10 according to their curriculum</div> <div>- On a daily basis, there are vocabulary and idiom tests with student</div> <div>- Mandatory self study</div> <div>※ Types of Class</div> <div>- One-on-one class/Native Class/ Small Group class</div> <div>- If there is 1 or 2 Students attending the native class, the management may decide to take 1:1 class with a Filipino teacher.</div> <div>-Saturday outdoor activity fee is not included in the tuition fee</div> <div>※ Vocabulary Test & Sentence Test</div> <div>- Junior ESL student must join these tests</div> <div>- Students develop their English Skills</div> <div>-There are penalties if students fail the test</div> <div>※ Self-Study</div> <div>- Students have to join self-study time everyday excluding the weekends and holidays</div>
07:00 ~ 07:50	Breakfast	07:20 ~ 07:50			
08:00 ~ 08:50	1st Class	08:00 ~ 08:40			
08:55 ~ 09:45	2nd Class	08:45 ~ 09:25			
09:50 ~ 10:40	3rd Class	09:30 ~ 10:10			
10:45 ~ 11:35	4th Class	10:15 ~ 10:55			
11:40 ~ 12:30	5th Class	11:00 ~ 11:40			
12:30 ~ 13:20	Lunch	12:30 ~ 13:20			
13:30 ~ 14:20	6th Class	11:45 ~ 12:25			
14:25 ~ 15:15	7th Class	13:30 ~ 14:10			
15:20 ~ 16:10	8th Class	14:15 ~ 14:55			
16:15 ~ 17:05	9th Class	15:00 ~ 15:40			
17:10 ~ 18:00	10th Class	15:40 ~ 16:20			
18:00 ~ 18:50	Dinner	18:00 ~ 18:50			
19:00 ~ 19:50	11th Class	19:00 ~ 19:50			
20:00 ~ 20:40	12th Class	20:00 ~ 20:40			
20:40 ~ 21:30	13th Class	20:40 ~ 21:30			
21:30~	Roll - Call	21:30~			
22:00 ~ 23:00	Re- Test	22:00 ~ 23:00			

※ In the case of family programs, only regular classes (1-10 classes) are provided on weekdays, and schedules are not included from 7 p.m. after dinner.
 ※ For family programs, weekend programs and holiday schedules are not included.

FAMILY COURSE PROGRAM

※ Kinder is 4-6 years old.

Course	One on One	Small Group	Native Group	Self Study	Physical Activity
Junior ESL Course	5Times	2Times	1Time	1Time	1Time
Guardian Course	4Times				
Kinder Course	4Times				

▪ Class Type

- Duration : 1 to 24 weeks
- 50 minute classes with a 5 minute rest in between
- Course start : Once a month, on a Monday
- Family group student can join this course

Have you ever thought about learning English as a family? Our resort-style campus provides an ideal environment for families to learn English together while living safely and peacefully. During your stay, your family can enjoy our two big, clean swimming pools, or relax among tropical plants on our beautiful, landscaped lawn.



JUNIOR ESL PROGRAM

Course	One on One	Small Group	Native Group	Self Study	Physical Activity	Voca Idiom TEST	Essay Writing
Junior ESL Course	5 times	2 times	1 time	1 time	1 time	2 times	1time

▪ Class Type

- Duration : 1 to 24 weeks
- 50 minute classes with a 5 minute rest in between
- Course start : Every week, on a Monday
- Training Target : From 8 to 17 years old
- Every Friday, the 50 minutes class is shortened by 40 minutes.

CIJ started it's Junior Program in 2003. We have gained extensive experience with student management and smooth Communication with guardians . Up to the present, CIJ always put student's first that is why we have Mentoring System, Weakness Cure System, Safely System, Health Care System and lastly Every1 Care System for better stay and leanings.



Every Saturday Outdoor Activity(for Junior ESL)



To avoid busy weekends, Junior ESL student has outings every Saturday. Student can relieve the stress of studying with fun activities such as visiting resorts, historical sites, and other tourist attractions. Our students get to experience the fun, food, and culture of Cebu, a world-renowned tourist destination!

J PARK

PLANTATION BAY

CITY TOUR

BLUE WATER

SKY WATER PARK

EL-SAVADOR

WESTERN LAGOON

OCEAN PARK CEBU

CEBU SAFARI & ADVENTURE PARK

WALL CLIMBING

MOVIE & BOWLING

“VARIOUS AND EXCITING
SATURDAY
ACTIVITIES

- ※ Saturday outdoor activity fee is not included in the tuition fee.
- ※ Activity schedule can be adjusted by local condition.



JUNIOR ESL

Student's Daily Routine

SUPPORTING YOUR SUCCESS
WITH CIJ ENGLISH CAMP



Our Facilities

Supporting your success with CIJ Academy&School



“OCEAN VIEW'S A RESORT EXCLUSIVE USE CAMPSITE

Supporting your success
With CIJ Academy&School



CIJ Academy&School is located in Liloan City, a quiet and safe suburb of Cebu City. The campus looks and feels like a resort: you can see the ocean horizon right in front of the campus. The campus grounds are beautifully landscaped, with palm trees and various tropical plants combined with a wide, lush lawn. The campus doesn't feel like a school – it feels like you're on vacation!





There are two clean and spacious swimming pools in the campsite. A professional swimming pool manager disinfects and monitors them every day, so they are always fresh and clean. Blow away the stress from studying English by swimming in the beautiful pool. Your health will also improve.



“CLEAN AND TIDY SWIMMING POOL FACILITIES

Supporting your success
with CIJAcademy&School



COMFORTABLE & PLEASANT DORMITORY FACILITIES

Supporting your success
with CIJAcademy&School



The room on the first floor has a garden view, and the room on the second floor has an ocean view. Live looking at the beautiful garden and the sea. . Rooms include quality beds, air conditioners, closets, desks, chairs, etc. airlifted directly from Korea.

We provide housekeeping, cleaning, and laundry services three times a week.



“ SPECIALIZED CLASSROOM FACILITIES BY TYPE

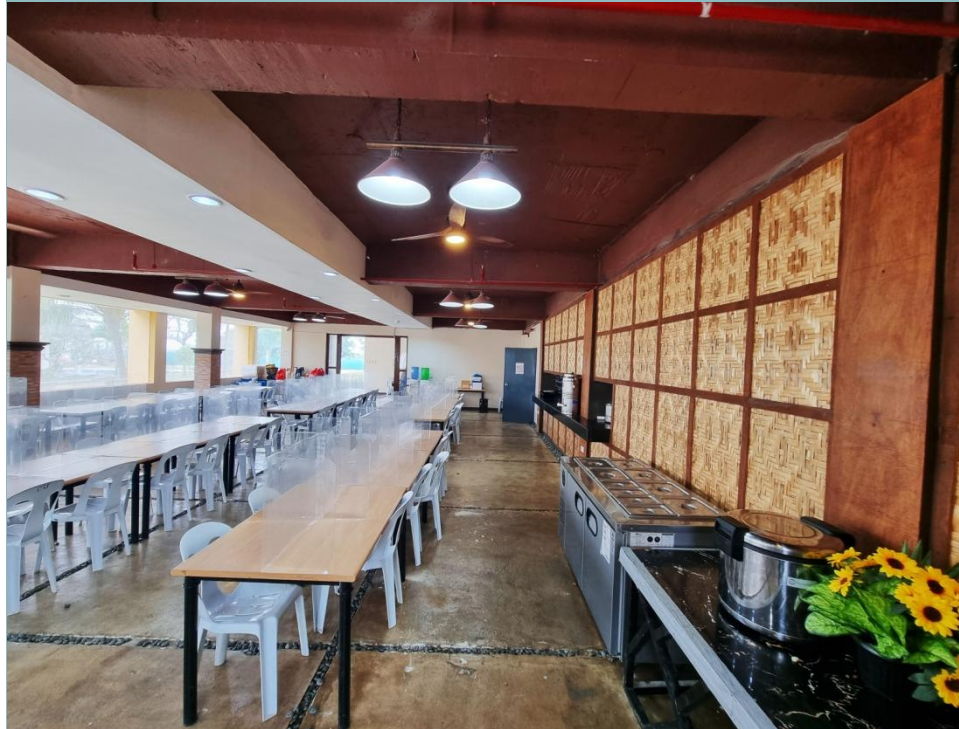
1:1/1:8 Specialized Classroom for Students to Focus on Class

Supporting your success
with CIJ Academy & School



The campus has specialized lecture rooms for each teacher, so that students can concentrate on classes in a pleasant environment. When needed, CIJ provides students with high-concentration classes in specific areas of English. These classes are taught by teachers who specialize in those specific areas of English. To promote rapid learning, we have also created a strict "Only English Zone" in classrooms, where students are only allowed to speak English.





■ MEAL TIME Weekday

Breakfast	07:00 ~ 07:50
Lunch	12:30 ~ 13:20
Dinner	18:00 ~ 18:50

■ MEAL TIME Weekend & Holiday

Breakfast	08:00 ~ 08:50
Lunch	12:30 ~ 13:20
Dinner	18:00 ~ 18:50



“ SPACIOUS & CLEAN DINNING FACILITIES

Supporting your success
with CIJAcademy&School

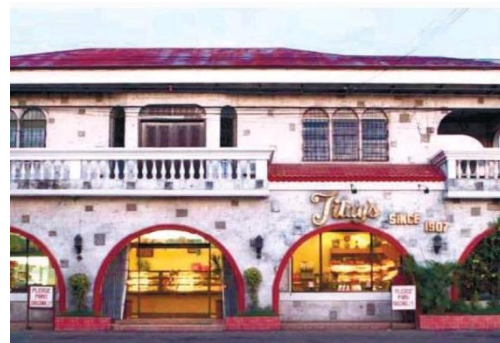
We offer a variety of nutritional foods in buffet type every day. And they open a salad bar to serve a variety of tropical fruits and vegetables. Since students of various nationalities are studying together, they serve food from various countries every two weeks as a special meal



Information

Supporting your success with CIJ Academy&School

Around C Pictures



Activity Pictures



POSSIBLE DATES FOR ADMISSION

SUPPORTING YOUR SUCCESS
WITH CIJ Academy & School

These are the available schedules with date and number of weeks for adult students to register at CIJ Academy&School registration. Please contact CIJ Academy & School or our partner agency for registration for Second half of 2023.

▪ The schedule may change depending on the local situation.

Date of Admission	Registered Weeks	Date of Admission	Registered Weeks
Aug.27.2023	Stay available until Dec 31, 2023	Oct.29.2023	Stay available until Dec 31, 2023
Sep.03.2023	Stay available until Dec 31, 2023	Nov.05.2023	Stay available until Dec 31, 2023
Sep.10.2023	Stay available until Dec 31, 2023	Nov.12.2023	Stay available until Dec 31, 2023
Sep.17.2023	Stay available until Dec 31, 2023	Nov.19.2023	Stay available until Dec 31, 2023
Sep.24.2023	Stay available until Dec 31, 2023	Nov.26.2023	Stay available until Dec 31, 2023
Oct.01.2023	Stay available until Dec 31, 2023	Dec.03.2023	Stay available until Dec 31, 2023
Oct.08.2023	Stay available until Dec 31, 2023	Dec.10.2023	Stay available until Dec 31, 2023
Oct.15.2023	Stay available until Dec 31, 2023	Dec.17.2023	Stay available until Dec 31, 2023
Oct.22.2023	Stay available until Dec 31, 2023	Dec.24.2023	Stay available until Dec 31, 2023



CIJ Academy&School

LILOAN CIJ EDUCATION INC.,

08-302 Purok Mabini, Poblacion Liloan, Cebu, Philippines.
Tel. +63-32-503-9846 / e-Mail. cijacademy@hanmail.net

Introduction of Cebu

“ Philippines the best tourist city The largest language training area

Cebu is one of the best tourist cities in the Philippines. It has the largest number of language schools, as well as good weather, environment and infrastructure. Cebu is the most popular area for English camps. Cebu does not only provides opportunities for learning English, but also provide various activities in clean and unspoiled nature. Recently, it has become the center of English education not only for Asia but also all over the World.

Cebu Philippines



the largest language
training area



the best tourist
city



the best safe
city



the best weather and
nature

About Local Payment

Supporting your success with CIJ Academy&School





VISA Extension	30-day visa Korean Japanese Vietnamese Russian Thailander Mongolian	59-day visa (Get visa in own country) Taiwanese Chinese India Lebanese Jordanian	Period of stay (days)	Period of stay (months)
1 st Extension	Php.4,130	-	+29days(total 59days)	2months
2 nd Extension	Php.5,410	Php.5,410	+30days(total 89days)	3months
3 rd Extension	Php.3,540	Php.3,540	+30days(total 119days)	4months
4 th Extension	Php.3,540	Php.3,540	+30days(total 149days)	5months
5 th Extension	Php.3,540	Php.3,540	+30days(total 179days)	6months



Each country has different VISA regulations..

- Countries that have signed visa agreements with the Philippines, such as Korea and Japan, can stay visa-free for 30 days.
- Countries that have not signed visa agreements, such as Taiwan and China, must receive 59 visas from their home countries when entering the country.
- Taiwanese citizens are eligible for an eTA (eTA) in the Philippines.



Students will stay in the Philippines on tourist visas.

- Language trainees must continuously extend their tourist visas according to the training period.
- When extending a tourist visa, the language school is acting on behalf of students for the convenience of students.
- The visa extension period will disappear as soon as you leave the Philippines, and you will have to extend your visa again when you re-enter the country.

If you take an English class even for one day in the Philippines, you must get a special study license, or SSP. SSP will apply for issuance immediately after arrival at CIJ Language school, and you can take English classes up to 6 months after issuance.

SSP is issued under the name of the language school, so if the language training period exceeds 6 months or the language school changes, you must also get a new SSP.

SSP Fee

It stands for Special Study Permit. It is a permit that allows the Philippine government to enter the country on a general tourist visa rather than a student visa and study legally.

Preparation document for SSP

SSP application form
Admission Letter
2X2 Inch picture 3ps.



Php.6,800

ACR-I Card

Alien Certificate of
Registration Identity Card

Php.
3,500



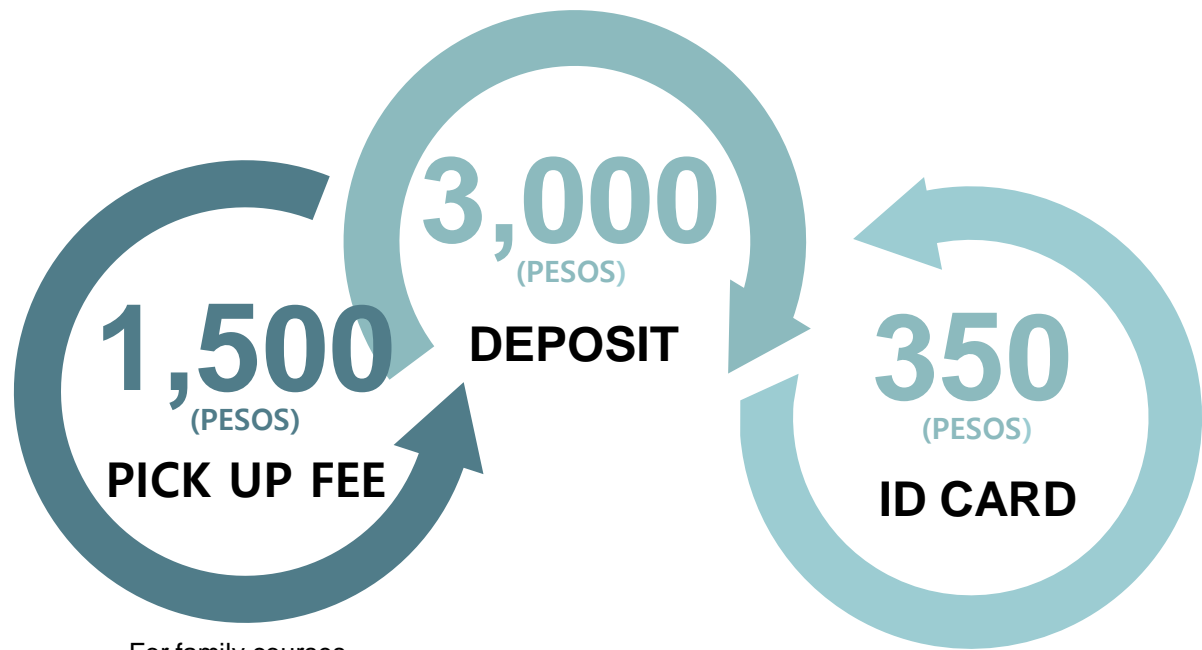
What is ACR-I CARD?

Since 2010, the Philippine Immigration Department has required all foreigners staying in the Philippines for more than 59 days to obtain Alien Certificate of Registration Identity Card (ACRI-CARD). It is a mandatory card if you stay in the Philippines for more than 59 days, and foreigners staying in the Philippines must always have an alien registration card.

ACR-I CARD special note

- It will be automatically issued when the Philippine Immigration Department extends the 2nd visa.
- The expiration date of the alien registration card is one year.
- The issuance cost is based on US dollars, so the cost may vary depending on the exchange rate.
- Depending on the situation of the Philippine Immigration Department (BI), the actual card issuance may be delayed after applying.

Local Payment



For family courses,
Php.2,500/ family

Local expenses are paid after entering the Philippines, and are calculated for each student according to the number weeks of registered after the orientation held every Monday. We will inform you of the local charges in detail, and you have to pay the person in charge by Tuesday when you arrive.



ADMINISTRATIVE FEES

Php.300/week

Public electricity, water bills, and language school facility maintenance costs are charged on a weekly basis.



BOOK FEES

Php.150~300

The cost varies depending on the student's choice of textbooks, and it will be deducted from the deposit at the end of the language study.



ELECTRICITY BILLS

Php.500/week

It is charged at a base rate of 500 pesos per week.
If it exceeds 15 kw,
There will be an additional charge of 25 pesos per 1kw.



WATER BILLS

Php.250/week

A basic rate of 250 pesos will be charged per week.
The cost is calculated according to the training period and will be paid upon arrival at the CIJ.

“ 2023 LOCAL PAYMENT LIST

SUPPORTING YOUR SUCCESS WITH CIJ Academy & School

For local expenses, student can pay after the orientation on Monday after arrival at CIJ Academy&School. The cost of the textbook(Around P150 to P300 / each book) is determined with the teacher during the first class of each student. Cost of the textbook is deducted from the deposit The remaining deposit will be returned to the student on the day of departure after additional electricity and textbook fees are deducted.

WEEK	1w	2w	3w	4w	8w	12w	16w	20w	24w
SSP	6,800	6,800	6,800	6,800	6,800	6,800	6,800	6,800	6,800
ACR- I CARD						3,500	3,500	3,500	3,500
VISA						5,410	8,950	12,490	16,030
ID CARD	350	350	350	350	350	350	350	350	350
DPOSIT	3,000	3,000	3,000	3,000	3,000	3,000	3,000	3,000	3,000
ELECTRICI TY BILL	500	1,000	1,500	2,000	4,000	6,000	8,000	10,000	12,000
WATER BILL	250	500	750	1,000	2,000	3,000	4,000	5,000	6,000
ADMINI STRATIVE	300	600	900	1,200	2,400	3,600	4,800	6,000	7,200
PICK UP FEE	1,500	1,500	1,500	1,500	1,500	1,500	1,500	1,500	1,500
TOTAL	12,700	13,750	14,800	15,850	200,50	33,160	40,900	48,640	56,380




CIJ Academy&School

LILLOAN CIJ EDUCATION INC.,

08-302 Purok Mabini, Poblacion Liloan, Cebu, Philippines.
Tel. +63-32-503-9846 / e-Mail. cijacademy@hanmail.net

- ❖ **VISA EXTENTION FEES** : 1st VISA : 4,130 / 2nd VISA : 5,410 / 3rd VISA : 3,540 / 4th VISA : 3,540 / 5th : 3,540
- ❖ **ELECTRICITY BILL** : P500/Week (15KW / Week) Overused Electricity fee P25/KW
- ❖ **WATER BILL** : P250 / Week
- ❖ **ID CARD FEE** : P350(Picture fee include P100)
- ❖ **PICK-UP FEE** : P1,500 / Person, P2,500 / Family



CIJ Academy&School

LILLOAN CIJ EDUCATION INC.,

08-302 Purok Mabini, Poblacion Liloan, Cebu, Philippines.
Tel. 032-424-1299 / e-Mail. cijacademy@hanmail.net

Thank you!!

THANK YOU!!