

# API BECI CAMPUS MAP

-  **SPARTA CAMPUS**  
37 YANGCO RD.,  
UPPER GEN. LUNA
-  **CITY CAMPUS**  
48 ZONE VILLE G,  
MONTINOLA SUBD.
-  **BECI THE CAFE**  
43 GLADIOLA ST.,  
AMPARO HEIGHTS



## API BECI The Cafe

# 43 Gladiola Street, Amparo Heights, Camp 7 Baguio City, Philippines



## API BECI Sparta Campus





# 37 Yangco Rd., Upper General Luna Baguio City, Philippines



## API BECI City Campus

The Zone Vill - 48 Kisad Rd, Montinola Subd, Baguio City, Philippines



-  BECIinternational
-  apibeci\_official/
-  APIBECI
-  <http://www.beciedu.com/>

# SPARTA CAMPUS

## INTERNATIONAL ACADEMY







## APIBECI ACADEMY

It opened in 2002 with Speaking Prescription (Patent No. 10-2294735) as its flagship program and has maintained its reputation as one of the best speaking language schools since. We have prepared three unique and specialized campuses to cater to different students and purposes. 'Lady Campus', a healing campus for women only; 'City Campus', designed mainly for office workers that combine work and English training. Finally, 'Sparta Campus' that offers 24 ESL (Conversation Intensive Course) TOEIC, and IELTS in an environment that exposes students to English 24 hours a day. All BECI students can transfer to other BECI campuses if necessary.



# MULTI NATIONAL QUARTER 3+1 SYSTEM



3+1 system where three students and one Filipino teacher live together in a 4-person dormitory. When the students return to the dormitory after finishing all classes, they will practice useful daily expressions with their roommate teacher in the dorm.



## BECI SPARTA CAMPUS "24 ENGLISH"

The ultimate goal of learning English is 'speaking'. BECI Sparta campus has introduced the Multi-National Quarter policy to expose students to a 24-hour English speaking environment. With this system, we can assure a speedy improvement on students' speaking fluency. These are supported by intensive classes that caters to the different macro skills of the English language namely - Speaking, Writing, Listening and Reading to ensure holistically developed graduates.

What's more? We implement strict academic and dormitory policies to foster a firm study culture. Hence, students are not allowed to go out on weekdays (Monday - Friday)

## Curriculum

<b>24 ESL</b>
10 classes
1:1 - 5 classes
Group - 2 classes
Night ( Mandatory) - 3 Classes

<b>TOEIC TOEIC GUARANTEE</b>
9 classes
1:1 - 4 classes
Group - 2 classes
Night ( Mandatory) - 3 Classes

<b>IELTS IELTS GUARANTEE</b>
9 classes
1:1 - 4 classes
Group - 2 classes
Night ( Mandatory) - 3 Classes



# 24 ESL

24 ESL is a course for students who want to improve their English intensively in a short period of time through 7 hours of regular classes a day and 3 hours of night study. It offers an SP test once a week to diagnose weaknesses; provide correction and assess progress using a standard ten-criteria evaluation (grammar, pronunciation, intonation, etc.).

## 24 ESL Course Details

Course Period	1 - 24 weeks
Starting Date	Every Monday
Class Time	1:1 Class - 5 classes Group Class - 2 classes Night Self-study - 3 classes
Main Target	- For those who want to improve English speaking skills and to gain confidence in speaking. - For those who want to study in a strict environment following a fixed schedule.

## 24 ESL Sample Timetable

Class Time	Subject
08:00~08:50	Reading
09:00~09:50	Break
10:00~10:50	Speaking
11:00~11:50	Writing
12:00~12:50	Lunch
1:00~1:50	Speaking for SP
2:00~2:50	GC Speaking
3:00~3:50	Picture Description
4:00~4:50	GC Listening
5:00~5:50	Daily Voca20 암기
6:00~6:50	Daily Dialogue10 암기
6:50~8:00	Dinner
8:00~8:50	Daily Test(Voca & Dialogue)

\* Above is a sample timetable. Necessary adjustments can be done according to the preferred curriculum.

## 1:1 CLASS (5 hours)

- Speaking for SP - aims to help the students answer specific questions without hesitation; vocabulary and expressions learned in class will be used in the weekly SP test.
- Reading - aims to improve student's comprehension skills through reading activities which would boost vocabulary and understanding as well as pronunciation.
- Speaking - This course aims to improve students' speaking skills by expressing their thoughts about a specific topic, and other interactive speaking activities that offers a lot of opportunities to practice speaking.

\* In 1:1 class, students can focus on the subject they want to improve more (course change is allowed).

## GROUP CLASS (2 hours)

- GC Speaking - The students practice speaking with confidence through different activities in the class.
- GC Listening - Understanding common expressions/ Figuring out the main topic in a conversation/ Practicing listening to others / Understanding the rules of connection in English /Developing listening strategy .

## NIGHT STUDY(3 hours)

- Daily Voca (Words) Memorize 20 words 1 hour
- Daily Dialogue (Dialogue) Memorize 10 sentences 1 hour
- Daily test (Words & Dialogue) (1hour) The average passing score is 80%. Students who fail the test will construct 10 sentences for each vocabulary learned and hand them in the next day.

\* Night self-study at Sparta campus is mandatory. When the students fail to attend the Night self-study, the time will be doubled and added to Saturday self-study time.

# TOEIC/ Guarantee

TOEIC course is for students who would like to prepare for the TOEIC test or those who want to solidify their basic grammar and vocabulary. TOEIC Guarantee course aims to prepare the students to be thoroughly ready for the TOEIC tests and ensure that the students achieve their desired score based on their entry test scores.

## TOEIC Basic and Guarantee Course Details

Course Period	Basic Course 1 - 24 weeks	
	Guarantee Course minimum of 12 weeks	
Starting Date	Every Monday	
Class Time	1:1 Class 4 classes	
	Group Class - 2 classes	
	Night Self-study - 3 classes	
Basic Course Level	All levels	
Guarantee Course Level	Entry Score	Guaranteed Score
	300	+ 600 up
	500	+ 800 up
	700	+ 900 up

TOEIC Basic and Guarantee courses are designed the same. And when the students do not yet hold a TOEIC score, they can take BECI TOEIC mock test and will be assigned to the class according the mock test result.

## TOEIC Sample Timetable

Class Time	Subject
08:00~08:50	Reading Part 5,6
09:00~09:50	Break
10:00~10:50	Listening Part 1,2
11:00~11:50	Reading Part 7
12:00~12:50	Lunch
1:00~1:50	Listening Part 3,4
2:00~2:50	GC Speaking
3:00~3:50	Break
4:00~4:50	GC Listening
5:00~5:50	Daily Test(RC1)
6:00~6:50	Daily Test(RC2)
6:50~8:00	Dinner
8:00~8:50	Daily Test(Voca)

\* Above is a sample timetable. Necessary adjustments can be done according to the preferred curriculum.

## 1:1 CLASS (4 Hours)

- RC Part (+Review) 2 hours (Part 5~7) - This course aims to improve the students' TOEIC grammar skills by teaching them basic patterns, main points and know-hows to help them find the correct answer in the given story and questions in an actual test.
- LC Part (+Review) 2 hours (Part1~4) - The teachers will explain know-hows and strategies to help students understand different question types. The teachers will have the students listen to the story repeatedly to improve their listening skills.

In 1:1 class, students can focus on the subject they want to improve.

## GROUP CLASS (2 hours)

- TOEIC GC Grammar Speaking – Grammar is a basic skill for all English tests. The TOEIC GC Grammar Speaking is designed to enhance the basics of different grammar concepts.
- TOEIC GC Listening - GC Listening helps the students improve their overall listening comprehension in order to do well in TOEIC tests.

## NIGHT STUDY(3hours)

- The night study (Mon-Fri) of TOEIC basic and guarantee courses provides 2 hours of mock test, and 1 hour of TOEIC voca test.

• The benefits and conditions of the TOEIC Guarantee Course

- 1 When the students can not reach the desired score, the tuition fee will be waived until they receive the score (Visa extension fee, dormitory fee, books, and bills will be charged.)
- 2 2 official tests will be provided (When the tests are not held in Baguio, the test registration fee will be paid in pesos to the students.)
- 3 When the students in the Guarantee course receive one warning, they lose their qualification as a guarantee student.(lateness 3times=1warning/absent1time=1warning)
- 4 Every night, the students are required to take a mock test(2 hours) and voca test(1 hour)
- 5 The students are supposed to take an official TOEIC test within 12 weeks.



# IELTS / Guarantee

IELTS course is for students who wants to prepare for the IELTS test or those who want to solidify their basic grammar and vocabulary. IELTS Guarantee course aims to prepare the students to be thoroughly ready for the IELTS tests and ensure that the students achieve their desired band score.

## IELTS Basic / Guarantee Details

Course Period	Basic Course 1 - 24 weeks Guarantee Course minimum of 12 weeks	
Starting Date	Every Monday	
Class Time	1:1 Class 4 classes Group Class - 2 classes Night Self-study - 3 classes	
Basic Course Level	All levels	
Guarantee Course Level	Entry Score	Guaranteed Score
	4.0	+ 5.5 up
	5.0	+ 6.0 up
	6.0	+ 6.5 up
	6.5	+ 7.0 up

IELTS Basic and Guarantee courses are designed the same. And when the students do not yet hold the IELTS score, they can take BECI IELTS mock test and will be assigned to the class according the mock test result.

## IELTS Sample Timetable

Class Time	Subject
08:00~08:50	Reading for IELTS
09:00~09:50	Break
10:00~10:50	Listening for IELTS
11:00~11:50	Speaking for IELTS
12:00~12:50	Lunch
1:00~1:50	Writing for IELTS
2:00~2:50	GC Speaking
3:00~3:50	Break
4:00~4:50	GC Listening
5:00~5:50	Daily IELTS Test
6:00~6:50	IELTS Test Review
6:50~8:00	Dinner
8:00~8:50	Daily IELTS Voca

\* Above is a sample timetable. Necessary adjustments can be done according to the preferred curriculum.

### 1:1 CLASS (4 hours)

- Speaking - aims to improve the students' confidence and English speaking skills. It subdivides parts based on previous questions so that we can familiarize ourselves with different types through various exercises.
- Reading - The students can learn how to strategically solve difficult reading comprehension problems, from simple difficulty to high difficulty, and learn practical skills by repeating mock tests.
- Listening - It focuses on acquiring practical skills and strategies to answer each section of the listening exam, identifying the types of previous questions, and giving you hands-on practice.
- Writing - To help students reach their full potential, we provide effective instruction in individualized writing methods and provide detailed feedback on writing assignments.

\* In 1:1 class, students can focus on the subject they want to improve more (course change is allowed).

### GROUP CLASS (2 hours)

- IELTS GC Speaking - Through IELTS GC Speaking class, the students can learn strategy and skills in IELTS speaking. They can also answer difficult questions. They will be provided with detailed explanations of the questions and sample answers to prepare themselves for the IELTS speaking test.
- IELTS GC Listening - IELTS GC Listening provides the recent listening content and also gives intensive feedback from the teachers in which they can study vocabulary needed in the IELTS test.

### NIGHT STUDY(3 hours)

- The night study (Mon-Thu) at IELTS basic and guarantee courses provides 2 hours of mock test, and 1 hour of an IELTS voca test.
- Daily test review will be conducted in the 1:1 class the next day and weekly review will be done on Friday night.

#### • The benefit and condition of the IELTS Guarantee Course

- 1 When the students can not reach the desired score, the tuition fee will be waived until they receive the score (Visa extension fee, dormitory fee, books, and bills will be charged.)
- 2 2 official tests will be provided (When the tests are not held in Baguio, the test registration fee will be paid in pesos to the students.)
- 3 When the students in a guaranteed course receive one warning, they lose their qualification as a guaranteed student. (lateness 3 times = 1 warning / absent 1 time = 1 warning)
- 4 Every night, the students are required to take a mock test(2 hours), a voca test(1 hour)
- 5 The students are supposed to take an official IELTS test within 12 weeks.

# ADD-ON PROGRAMS

The Add-on Programs of BECI Sparta Campus were developed to provide students with opportunities to practice lessons from regular classes in more diverse ways. Both SP PROGRAM and REHAB PROGRAM are only available to students from 24 ESL courses.

\* Registration for add-on programs will be conducted locally after enrollment.

## 1 SP PROGRAM for ESL

SP (Speaking Prescription) is an intensive speaking practice program in which students self-evaluate their improvement through grammar classes and speaking tests. Through the speaking tests, students can be more aware of their weaknesses in speaking as well as other areas of the language (vocabulary, grammar, stress, pronunciation, etc.) and can be remedied through intense practices.

Students of the 24 ESL course take this SP program as one of the 1:1 classes, and through this, students can experience firsthand how their speaking skills have improved. Through the SP program, we aim to enable students to speak English, and use the vocabulary and expressions learned in class in the weekly SP interview test.



24 ESL course students take an SP interview test once a week, and TOEIC & IELTS students take an SP interview test once a month.

## 2 REHAB PROGRAM for 24 ESL

The REHAB program is a pronunciation correction program that provides high-level training in pronunciation and vocabulary to improve clarity and accuracy in English speaking and to use more diverse vocabulary.

The REHAB program consists of less than five students with the goal of teaching students the correct pronunciation of native speakers under the guidance of a native speaker of BECI Language School.



We provide students with 4 hours of REHAB(Group Class for a week) replacing their regular classes during their regular program. (REHAB program is conducted with group classes of less than 5 people.)



# ADD-ON PROGRAMS

## 3 COFFEE ESL

API BECI ACADEMY launches the COFFEE-ESL program in partnership with 'Farm to Cup'. A coffee education company approved by the Philippine Tourism Authority to respond to the growing coffee industry and students' interest in it. Students study the ESL course of their choice on weekdays and take the COFFEE-ESL course at Farm to Cup every Saturday for 4 times.

### LESSONS

#### DAY 1

**About the Coffee Industry**  
Coffee Species: Arabica, Robusta, Liberica, Excelsa  
Top Coffee Producing Countries and the Coffee Industry  
Coffee Tasting  
Describing Tastes of Different Coffee Origins



#### DAY 2

**Coffee Farm Experience**  
Different Coffee Arabica Varieties: From the Nursery to the Farm



#### DAY 3

**Roasting and Barista**  
Selecting Coffee Beans to Roast  
Roasting Coffee  
Tasting the Roasted Coffee



#### DAY 4

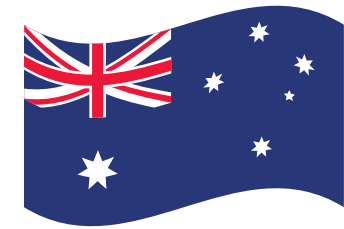
**On the Job Training in Cafe**  
Barista and Café Management  
Coffee Brewing Methods [Pour Over, Espresso Machine, ETC]  
Creating your Café Coffee Menu



## 4 AJPP (Australia Job Package Program)

By applying to our program, student will have all the information and knows-hows you need to live and work in Australia. Student will save time and money for 1-2 years, as well as gain a variety of experiences, friends and memories.

This program is proceeded jointly by foreign language Agency, BECI in the Philippines, and OZCAREER in Australia. You must apply for the program through an agent for “Language Study in the Philippines + Australia Employment Package”.



*\*All about Australian Working Holiday!  
One-stop from settlement in Australia, language study, job and employment!*



## SPECIAL REASONS OF AJPP

One-stop from settlement in Australia, language study, job and employment!



1. Short-term intensive improvement of English
2. Reasonable Tuition Fees
3. Student from All around the World



1. Pick-up and short-term accommodation provided
2. Initial settlement service such as opening a bank account
3. Other job training programs necessary for initial settlement in Australia



1. Matching the quality jobs that applicants want
2. Guaranteed minimum wage (AUD \$21.38) or higher
3. Guaranteed average monthly salary (approx. AUD \$4,000)

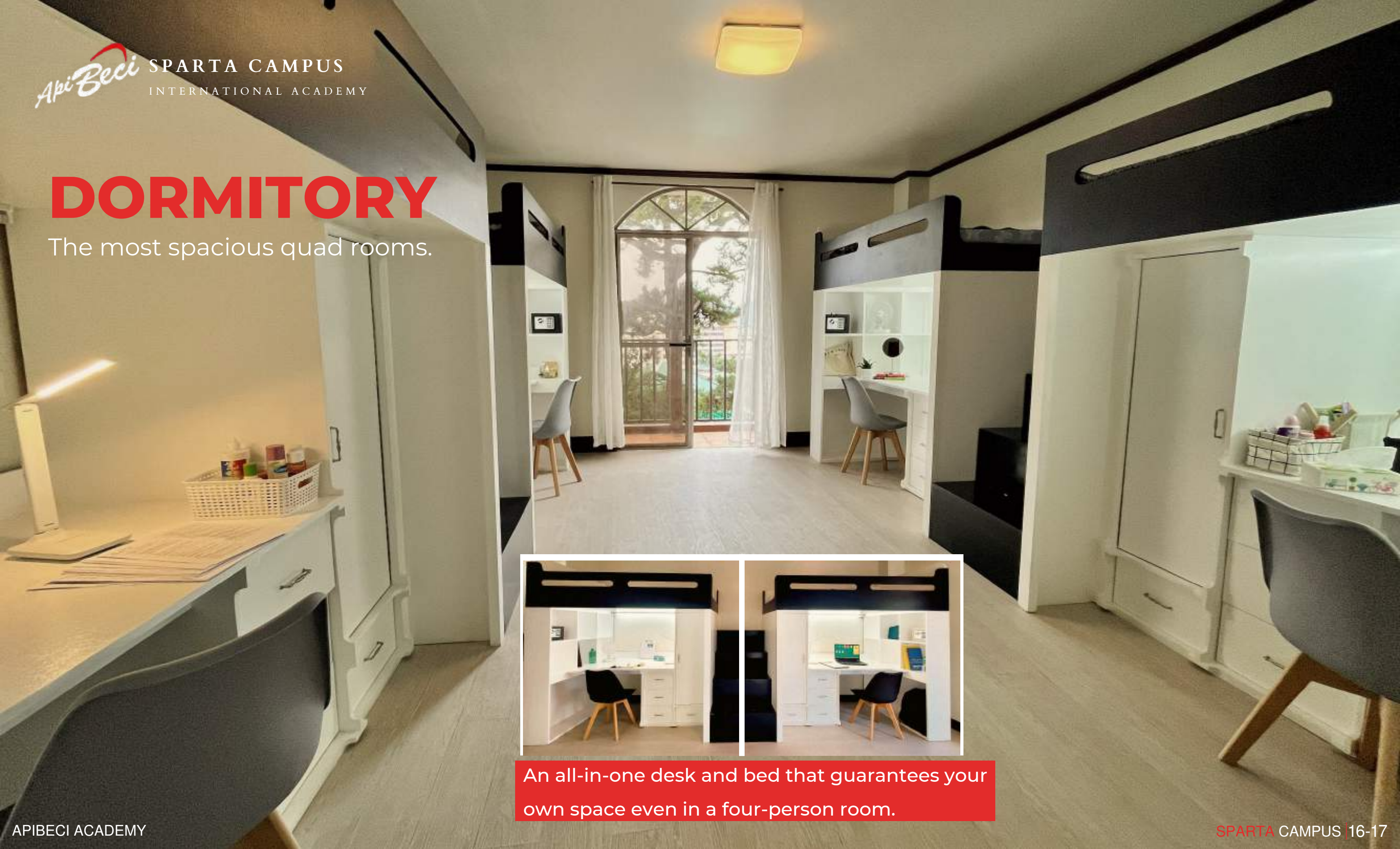


*A new Language  
is a new life*



# DORMITORY

The most spacious quad rooms.



An all-in-one desk and bed that guarantees your own space even in a four-person room.



# DORMITORY

Each dormitory is equipped with a big window and a balcony.



In addition to the spacious toilet and shower, there is an external washbasin for your convenience.





# 1:1 Classroom

Modern and comfortable newly-built classrooms.



One – direction classroom layout to enhance concentration





# Group Classroom

Open type and contemporary group classrooms



Spacious and modern GC Classrooms



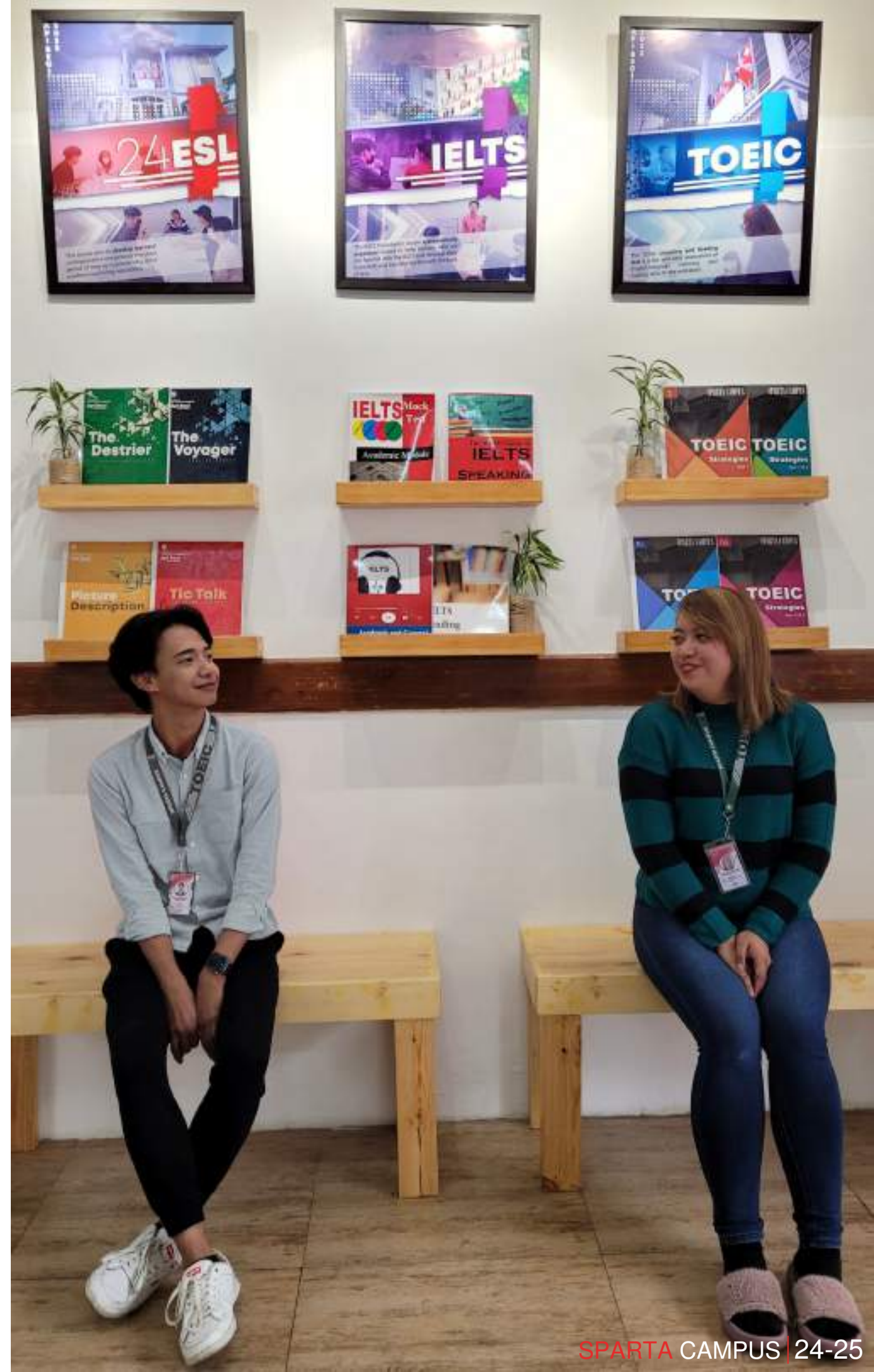




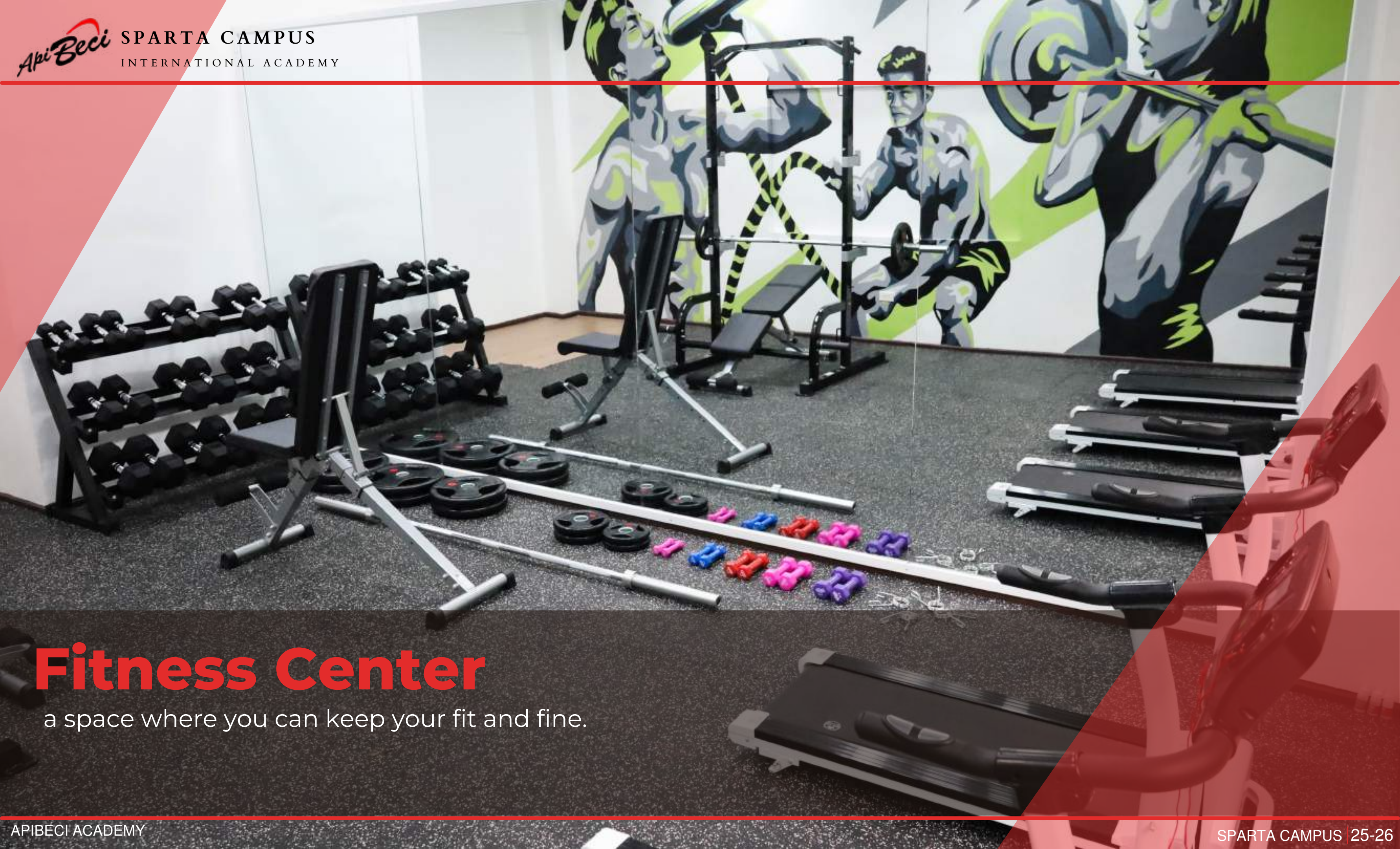
# Test Center

# Dining Hall

a spacious and pleasant dining space environment







# Fitness Center

a space where you can keep your fit and fine.



# API BECI

## Regulations and Notifications

The rules in this brochure are basic rules that only specify refunds, going out/staying out, and Corona response rules.

- In order to ensure the students' safety, "We only accept students who have completed the 3rd vaccination". (All students must submit a vaccination certificate through an agent before departure.)

### 1. Refund Policy

#### A. Before departure

- If there is more than 15 days left before the scheduled departure date, a full refund is possible except for the admission fee of 100,000 won.
- If there is 7 to 14 days left before your scheduled departure date, you can get a refund of all expenses except for the admission fee of 100,000 won and the penalty of 200,000 won.
- If the scheduled departure date is less than 7 days, you can get a full refund except for the admission fee of 100,000 won and the penalty of 300,000 won.

#### B. After departure

- Students who plan to leave earlier than the training period due to personal reasons during training must notify the school management at least one week in advance.
- Refunds and fees must be processed with the student's registered agent.
- Local fees are non-refundable.
- \* Refunds will be issued 4 weeks after leaving the Philippines.

### 2. Outing & Staying Out Rules

No going out from Monday to Friday / Free on Saturdays and holidays / Return to the campus by 10 pm on Sundays.

### 3. Corona response regulations

- Students who show symptoms such as high fever and cough will be diagnosed with a rapid antigen test (ANTIGEN).
- In case of a confirmed case, the student will be isolated in a condominium and will be strictly monitored.
- We deliver 3 meals a day to your room.
- Online classes are provided as much as one-on-one classes for the course the student is enrolled in.
- Quarantine for a minimum of 7 days and a maximum of 14 days, and receive an ANTIGEN test every 7 days. (Corona test cost and medical expenses must be paid by the person himself/herself)
- After 7 days of quarantine, you can return to classes after receiving a negative diagnosis through a self-diagnosis kit or rapid antigen test.
- After a negative test, you will be returned to the academy, and compensation classes for the quarantine period will not be provided.

# BECI CAMPUS

## Prospective Students

### BECI THE CAFE

Students who are afraid to speak English or those with beginner skills who want to improve their English skills in a short time. Beginners who want to enjoy a healing forest garden with only women, those who want to travel around the world, those who want to make lifelong friends, and those who want to improve their English skills while staying close with teachers in a small group.



### SPARTA CAMPUS

Students who want to improve their speaking skills in a short period of time through systematic management of the Spartan format or to obtain desired test scores such as TOEIC & IELTS quickly, and all students who need a strong Spartan English course for studying abroad, working holiday, etc.



### CITY CAMPUS

Everyone who needs English, from beginners who start their careers after graduating from college to seniors who are thinking about studying abroad after retirement. All those who need business English such as fluent and logical presentation skills used in real business situations including office works, freelancing, start-up job for students, corporate group training, overseas business prospects, and English interviews.





# Activities

is more fun  
in Baguio City

Explore Baguio's fantastic activity spots!  
Discover its hidden gems!  
Take a day trip out of the city!



CAFE IN BAGUIO



SHOPPING IN SM BAGUIO



NIGHT MARKET



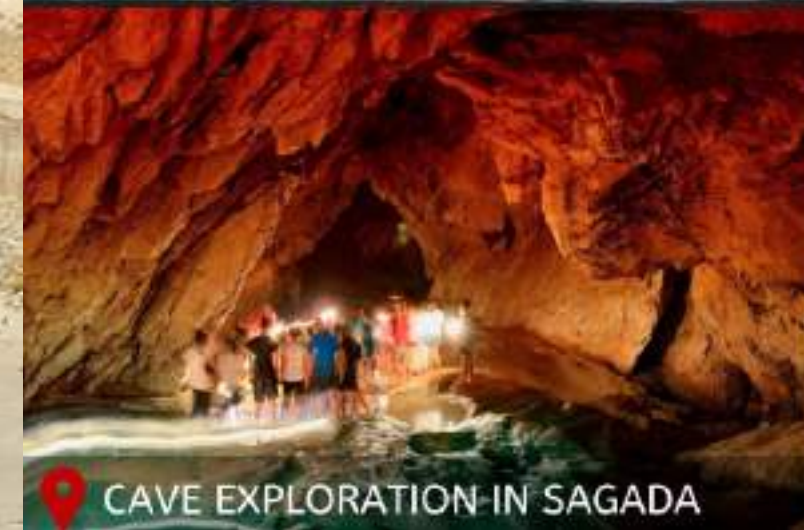
RESTAURANTS IN BAGUIO



SURFING IN LA UNION



BANANA BOAT IN HUNDRED ISLANDS



CAVE EXPLORATION IN SAGADA



SPANISH TOWN IN VIGAN

## Enjoy Philippine Activities